

Sew Christmas trees

Instructions No. 3121

Difficulty: Advanced

Working time: 4 Hours

Fancy sewing something yourself for **Christmas**? In this step-by-step guide, we'll show you how to sew beautiful **DIY Christmas trees**. Not only are they easy to make, they also add a personalised, festive touch to your home. Let's get creative together!



Step 5: Decorating the Christmas tree

Now comes the fun part: the decoration! Tie a pretty bow made of satin or jute ribbon and attach it to the lace of your

Christmas tree. You can either sew the bow on or hot glue it in place. Add matching sprinkles to the bow to give your Christmas tree even more charm. Let your creativity run wild and design the rest of the decorations to suit your taste.

Get creative and get your materials

Your self-sewn Christmas tree is ready to decorate your home for Christmas. Want to sew more? Visit our online shop and discover our extensive range of fabrics, ideas, patterns, ribbons and other craft materials. Start your creative Christmas project today and conjure up a festive atmosphere in your home!

Dear sewer, as fabrics are seasonal goods and we always want to have trendy fabrics in stock for you, it can happen that the sewn fabric is no longer in our range.

In our fabric section you will find a large selection of great fabrics. Click [here](#) to discover [all the fabrics](#).

Must Have



Cotton fabric "Fir trees", Nature

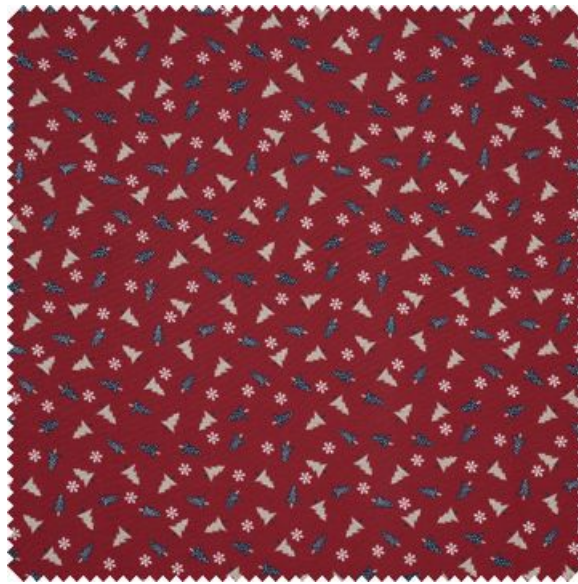
●
9,95 €

(1 m² = 7,11 €)

[Item](#)
[details](#)

Quantity:

Add to shopping cart



Cotton fabric "Fir trees", Red

9,95 €

(1 m2 = 7,11 €)

[Item details](#)

Quantity:

0.2

Add to shopping cart

New instructions every week directly in your inbox

[Register now >](#)

Article information:

| Article number | Article name | Qty |
|----------------|-------------------------------------|-----|
| 24976 | Cotton fabric "Fir trees"Nature | 1 |
| 24977 | Cotton fabric "Fir trees"Red | 1 |
| 24041 | VBS Scatter decorations "Red Angel" | 1 |
| 460125 | VBS Jute ribbon, 3 mm | 1 |
| 232487 | VBS Fill wadding, white, 300 g | 1 |
| 614085 | VBS Tree bark, natural | 1 |
| 686198 | VBS Tea light glasses, set of 4 | 1 |
| 491280 | Tealight candles, flat pack of 75 | 1 |
| 347556 | KREUL Disappearing ink pen | 1 |
| 51163 | Hot glue gun, 15-80 Watt | 1 |