

Sewing outdoor cushions

Instructions No. 2107

Difficulty: Advanced

Working time: 2 Hours

How nice it is to sit outside and enjoy the sun's rays. Sew some great **comfortable cushions** for your terrace or balcony and your **outdoor** area will become a lounge zone without further ado. The practical carrying handle makes it easy to take the cushions with you to a **picnic** and they can be easily transported in bad weather to clear them from the terrace or balcony.

How to sew the decorative cushions:

Cut two circles with a diameter of 60 cm per **cushion** and lay them right on top of each other.

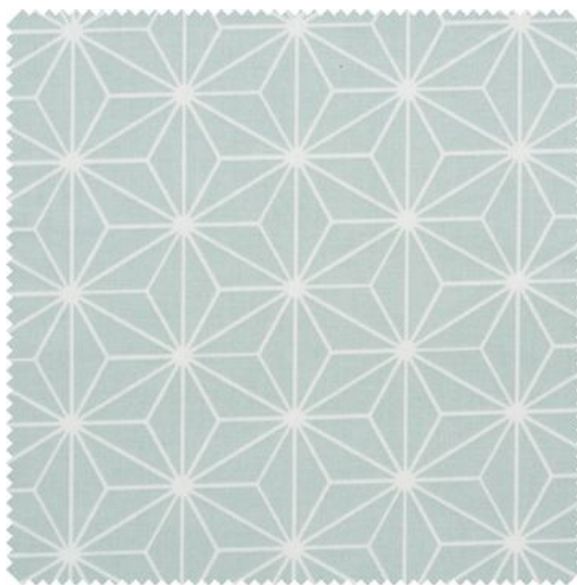
For the **handle**, cut a 25x5 cm strip from the imitation leather. Place the long edges on top of each other so that the "leather" side is on the outside. Fix with fabric clips and sew together at the open long edge so that 4cm remain open on both sides.

Place the resulting handle between the two fabric circles. Fix everything with fabric clamps and close all around with a straight stitch except for a turning opening.

Turn your pillow over and fill it with **polystyrene balls** (you need about 320 g per pillow). Fold the seam allowance inwards at the turning opening and topstitch it with a narrow edge.

For decorative gathering, pierce the centre of the cushion several times using a needle and a strong thread, e.g. embroidery thread. Finally, tie a knot in the front. You can also sew on a decorative button.

Must Have



Cotton fabric "Geometric star" Polyester coated, Petrol

13,99 €

(1 m² = 9,65 €)

[Item details](#)

Quantity:

Add to shopping cart

Article information:

| Article number | Article name | Qty |
|----------------|--|-----|
| 10400 | Cotton fabric "Geometric star" Polyester coated Petrol | 1 |

| Article number | Article name | Qty |
|----------------|---|-----|
| 10401 | Cotton fabric "Geometric star" Polyester coatedLight pink | 1 |
| 10402 | Cotton fabric "Geometric star" Polyester coatedGrey | 1 |
| 233934 | Styrofoam beads | 1 |
| 11405 | Imitation leatherGrey | 1 |
| 11402 | Imitation leatherBaby Rose | 1 |
| 11403 | Imitation leatherWhite | 1 |