

# Snowman candle

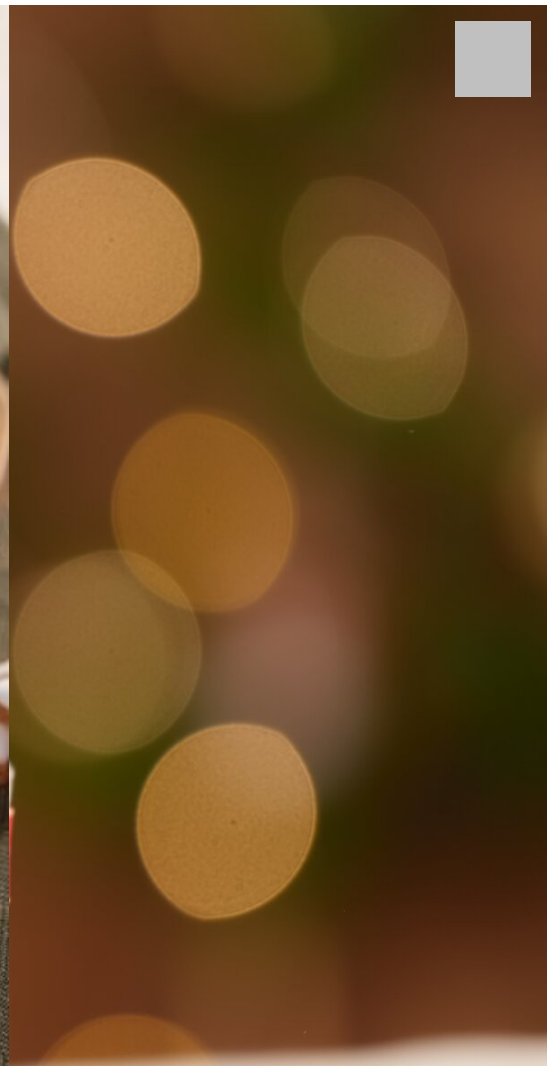
Instructions No. 2581

Difficulty: Beginner

Working time: 1 hour

When the days get shorter and it gets darker outside, it's all the nicer to light a **home-made candle**. Our homemade candle is very easy to make. You pour the candles and then decorate them in the style of a **snowman**.





**New instructions  
every week directly  
in your inbox**

[Register now >](#)



**New instructions  
every week directly  
in your inbox**



Register now >

