



Marla  
Hat

S11051





S11051

V.1/KD/MD

# Marla Hat

**Design:** Schachenmayr Designstudio



Knit



Intermediate



Recommended Yarn

## SIZE

Head circumference 52 – 56 cm

## MATERIALS

**Schachenmayr Catania**, 50 g ball

Approx. 50 g ≈ 125 m

Col. 00248 (leinen)

2 balls

Yarn amounts are approximate. Make sure to purchase enough of the same dye lot in order to complete your project. The color names refer to the German names on the sleeves. The amount of yarn needed approx. vary from person to person.

1 circ. needle size 3.5 mm (US size 4), 40 cm long

1 Double Pointed Needles (DPN) size 3.5 mm (US size 4)

5 stitchmarkers

60 cm bias tape (or rips ribbon)

1 tapestry needle for weaving in ends

## GAUGE

**Lacepattern with cable, using needle size 3.5 mm**

28 st and 32 Rd = 10 x 10 cm

If your gauge differs from the given gauge, use a hook of a larger or smaller size accordingly.

## HOW TO WORK THE HAT

Work the hat in two parts: first work the part in lacepattern in rounds, begin at the bottom and end at the top. Then pick up st at the cast-on edge of the first part and work according to the instruction and end with the I-Cord-edge.

## THE BASICS

### Lacepattern:

Number of st multiple of 14. Work according to the chart in rounds. All rounds are shown, always read from right to left and repeat the pattern (= 14 st). Repeat rounds 1– 16 throughout.

**Stockinette stitch:** in rounds knit all st.

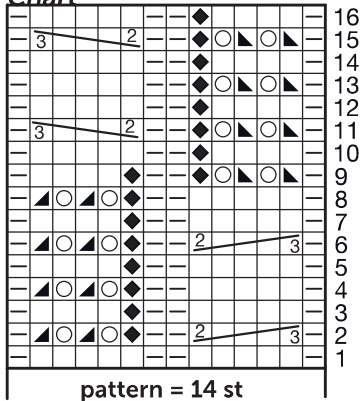
### I-Cord-edge (to bind off the stitches):

Work at the wrong side of the work.

Cast on 3 new st and place them on the left needle. Then k2, k2tog through the back loop (= the 3rd new st + the next st on the left needle). \* Slide these 3 st back onto the left needle, k2, k2tog through the back loop (= the 3rd and 4th st), repeat from \*. Sew the last 3 st and the first 3 st together, using kitchener st.

**skp:** slip 1 st knitwise, k1 and pass the slipped st over.

## Chart



## Key

□ = k1

▢ = p1

○ = yarnover

◆ = k1 through back loop

▲ = k2tog

▣ = skp

= place 3 st onto a cable needle in front of the work, k2, then k3 from the cable needle

= place 2 st onto a cable needle in back of the work, k3, then k2 from the cable needle



## INSTRUCTIONS

### Head:

Cast on 140 st and work in lacepattern in Rd = 10 patterns repeats each Rd. When the piece measures 10 cm = 32 Rd, work increases as follows to decrease the purled st: k2tog (= the first knitted st + the purled st before this st), work 3 st according to the chart, k2tog (= the 5th knitted st + the next purled st) = 100 st.

Work 4 Rd in stockinette st without decreases.

Place 5 stitch markers between every 19th and 20th st.

Then work the next Rd and work as follows: after a stitch marker k1, k2tog, before a stitch marker k2tog, k1 = decreasing 10 st every Rd = 90 M.

Work the decreases 4x in every 3rd Rd and 3x every other Rd = 20 st.

Work 1 Rd, then work k2tog throughtout and pull the 10 remaining st together and weave in the end.

For the **brim** pick up 120 st at the cast-on edge (= at every pattern repeat 12 st) and work 8 Rd in stockinette stitch.

Now work increases as follows:

**Rd 1:** work 20x after every 6th st a yarnover and knit the yarnover in the next Rd through the back loop = 140 st.

**Rd 2 and 3:** without increases.

**Rd 4:** \* k6, yarnover, k8, yarnover, repeat from \*.

**Rd 5:** knit the yarnovers through the back loop = 160 st.

**Rd 6 and 7:** without increases.

**Rd 8:** \* k6, yarnover, k10, yarnover, repeat from \*.

**Rd 9:** knit the yarnovers through the back loop = 180 st.

**Rd 10:** without increases.

**Rd 11:** \* k6, yarnover, k12, yarnover, repeat from \*.

**Rd 12:** knit the yarnovers through the back loop = 200 st.

Work another 4 Rd without increases, then bind off the st as die M mit der I-Cord-edgeabketten.

## FINISHING

Cut the bias tape to the appropriate head width. Place the tape around the head and cut with a 2 cm seam allowance.

Sew the tape with hand stitches on the inside of the cast-on edge.

## ABBREVIATIONS

k	= knit
p	= purl
Rd	= round(s)
RS	= right side
st(s)	= stitch(es)
tog	= together
WS	= wrong side)