

Cushion  
ABC

BS90413





BS90413

V.1/JS/DS

# Cushion A

Design: Jennifer Stiller

 Crochet

 Easy



Recommended Yarn

## SIZE

Approx. 38 x 42 cm

## MATERIALS

Schachenmayr Baby Smiles Lenja Soft, 25 g ball

Approx. 25 g ≈ 85 m

Col. 01136 (himbeere) 3 balls

Schachenmayr Baby Smiles Bravo Baby 185, 50 g ball

Approx. 50 g ≈ 185 m

Col. 01136 (himbeere) 2 balls

The amount of yarn needed can vary from person to person.  
stuffing material

1 crochet hook 5,0 mm

1 tapestry needle for weaving in ends

## GAUGE

12 st and 14 rows = 10 x 10 cm

## THE BASICS

### Crochet technique:

ch, sc

### Basic pattern:

Each letter consists of multiple sections. Work continuously with double yarn in sc in rows. Work a tch after each row and then turn over.

### Increase 1 st:

Work 2 sc in the same stitch.

### Decrease 1 st:

Fasten off 2 st together.

## INSTRUCTIONS

### Section A.1

Loosely ch 13 + 1 tch using one length of Lenja Soft and one length of Bravo Baby 185.

**Rows 1–13:** Work according to the chart. Pull the working loop longer and set the work aside.

### Section B

Loosely ch 13 + 1 tch.

**Rows 1–13:** Work according to the chart. Draw the yarn through and cut.

### Section A.2

Pick up the working yarn from Section A.1. Now you join both sections together by working sc on the foundation chain of Section B.

**Rows 14 - 45:** Work according to the chart. Pull the working loop longer and set the work aside.

### Section C

Start with a new length of yarn at the 14th st to the left in the 27th row and continue working as follows.

**Rows 28 - 45:** Work according to the chart. Draw the yarn through and cut.

### Section A.3

Pick up the working yarn from Section A.2. Now you join both sections together.

**Rows 46 - 60:** Work according to the chart. Draw the yarn through and cut.

Work the other side in the same way. Do not cut the yarn at the end of the other side. This length of yarn is used to join both pieces of work together.

## FINISHING OFF

Place both pieces on top of each other and work sc on the inside first and then on the outside. When you get to the corners, work 3 dc in 1 st. The inside corners are closed with 2 sc each. Gradually stuff the cushion and weave in all threads.

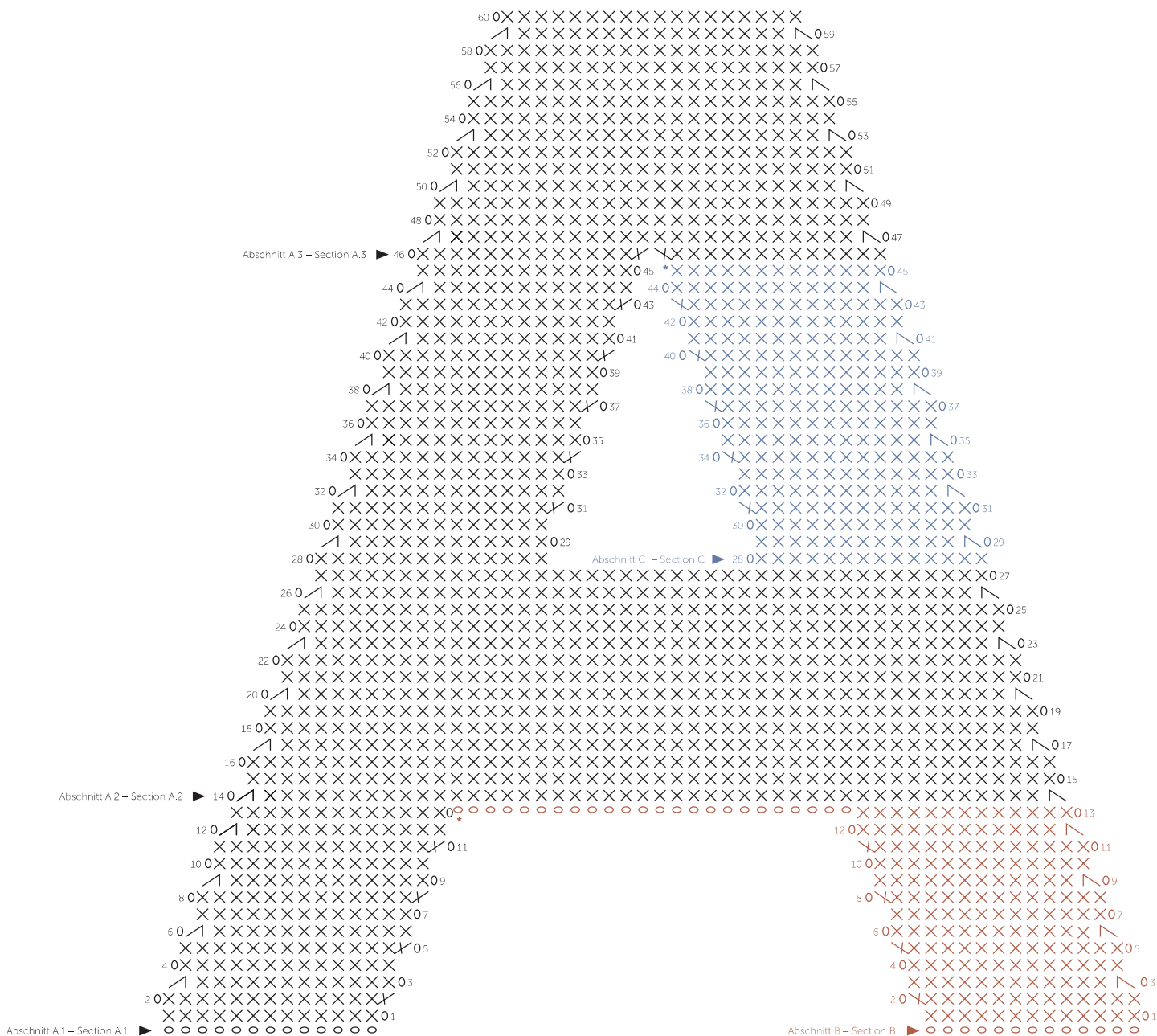
## ABBREVIATIONS

st = stitch  
 sc = single crochet  
 slst = slip stitch  
 ch = chain  
 st(s) = stitch(es)





# Chart



- Key**
- ▶ = start
  - o = 1 chain
  - X = 1 single crochet
  - ∧ = work 2 single crochets together
  - XX = 2 single crochets in 1 stitch
  - \*



BS90413

V.1/JS/DS

# Cushion B

Design: Jennifer Stiller

 Crochet

 Easy



Recommended Yarn

## SIZE

Approx. 32 x 42 cm

## MATERIALS

Schachenmayr Baby Smiles Lenja Soft, 25 g ball

Approx. 25 g ≈ 85 m

Col. 01038 (altrosa) 4 balls

Schachenmayr Baby Smiles Bravo Baby 185, 50 g ball

Approx. 50 g ≈ 185 m

Col. 01138 (altrosa) 2 balls

The amount of yarn needed can vary from person to person.  
stuffing material

1 crochet hook 5,0 mm

1 tapestry needle for weaving in ends

## GAUGE

12 st and 14 rows = 10 x 10 cm

## THE BASICS

### Crochet technique:

ch, sc

### Basic pattern:

Each letter consists of multiple sections. Work continuously with double yarn in sc in rows. Work a tch after each row and then turn over.

### Increase 1 st:

Work 2 sc in the same stitch.

### Decrease 1 st:

Fasten off 2 st together.

## INSTRUCTIONS

### Section A

Loosely ch 37 + 1 tch using one length of Lenja Soft and one length of Bravo Baby 185.

**Rows 1 - 23:** Work according to the chart. Draw the yarn through and cut.

### Section B

Start with a new length of yarn at the 14th st to the left in the 14th row and continue working as follows.

**Rows 15 - 46:** Work according to the chart. Draw the yarn through and cut.

### Section C

Start with a new length of yarn at the 15th st to the left in the 37th row and continue working as follows.

**Rows 38 - 60:** Work according to the chart. Draw the yarn through and cut.

Work the other side in the same way. Do not cut the yarn at the end of the other side. This length of yarn is used to join both pieces of work together.

## FINISHING OFF

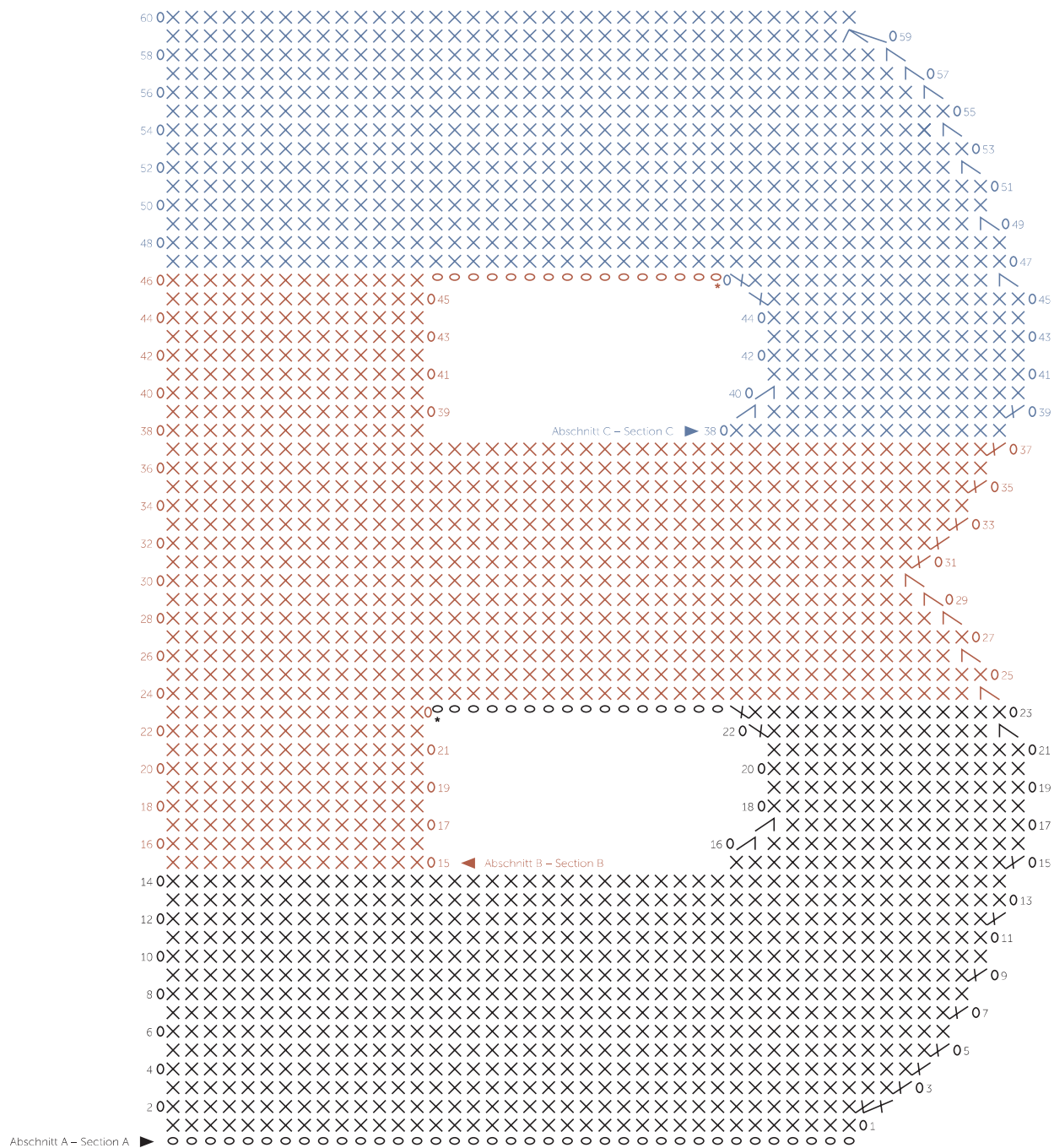
Place both pieces on top of each other and work sc on the inside first and then on the outside. When you get to the corners, work 3 dc in 1 st. The inside corners are closed with 2 sc each. Gradually stuff the cushion and weave in all threads.

## ABBREVIATIONS

st = stitch  
sc = single crochet  
slst = slip stitch  
ch = chain  
st(s) = stitch(es)



### Chart



### Key

- ▶ = start
- o = 1 chain
- X = 1 single crochet
- ∧ = work 2 single crochets together
- XX = 2 single crochets in 1 stitch
- \* = cut thread



BS90413

V.1/JS/DS

# Cushion

Design: Jennifer Stiller

 Crochet

 Easy



Recommended Yarn

## SIZE

Approx. 32 x 44 cm

## MATERIALS

Schachenmayr Baby Smiles Lenja Soft, 25 g ball

Approx. 25 g ≈ 85 m

Col. 01076 (salbei) 3 balls

Schachenmayr Baby Smiles Bravo Baby 185, 50 g ball

Approx. 50 g ≈ 185 m

Col. 01076 (salbei) 2 balls

The amount of yarn needed can vary from person to person.  
stuffing material

1 crochet hook 5,0 mm

1 tapestry needle for weaving in ends

## GAUGE

12 st and 14 rows = 10 x 10 cm

## THE BASICS

### Crochet technique:

ch, sc

### Basic pattern:

Each letter consists of multiple sections. Work continuously with double yarn in sc in rows. Work a tch after each row and then turn over.

### Increase 1 st:

Work 2 sc in the same stitch.

### Decrease 1 st:

Fasten off 2 st together.

## INSTRUCTIONS

### Section A.1

Loosely ch 10 + 1 tch using one length of Lenja Soft and one length of Bravo Baby 185.

**Rows 1 - 45:** Work according to the chart. Pull the working loop longer and set the work aside.

### Section B

Loosely ch 14 + 1 tch.

**Rows 39 - 45:** Work according to the chart. Pull the working loop longer and set the work aside.

### Section A.2

Pick up the working yarn from Section A.1. Now you join both sections together by working sc on the foundation chain of Section B.

**Rows 46 - 60:** Work according to the chart. Draw the yarn through and cut.

### Section C

Start with a new length of yarn at the 16th st to the left in the 16th row (crochet direction) and continue working as follows:

**Rows 16 - 22:** Work according to the chart. Draw the yarn through and cut.

Work the other side in the same way. Do not cut the yarn at the end of the other side. This length of yarn is used to join both pieces of work together.

## FINISHING OFF

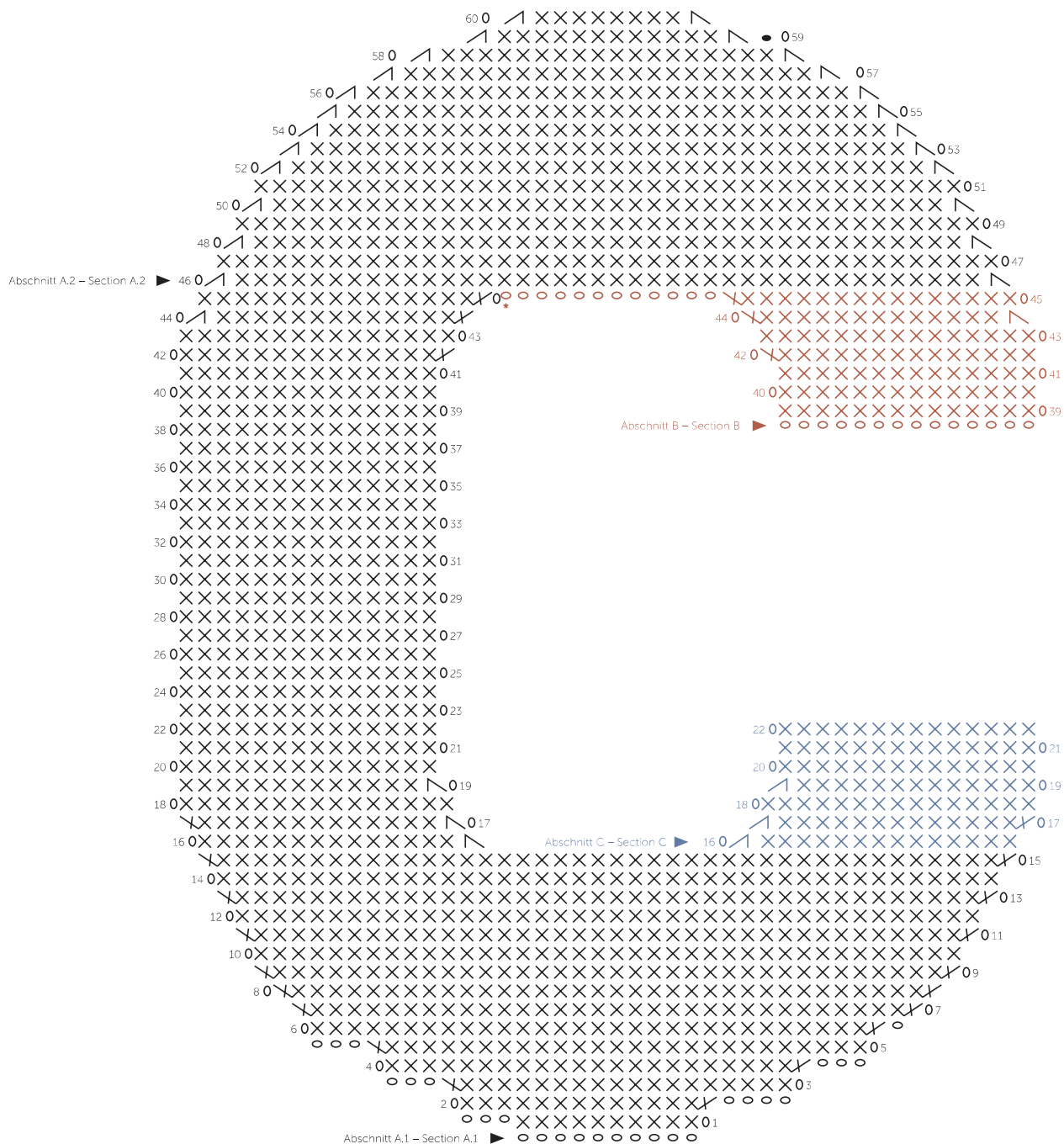
Place both pieces on top of each other and work sc on the inside first and then on the outside. When you get to the corners, work 3 dc in 1 st. The inside corners are closed with 2 sc each. Gradually stuff the cushion and weave in all threads.

## ABBREVIATIONS

st = stitch  
sc = single crochet  
slst = slip stitch  
ch = chain  
st(s) = stitch(es)



### Chart



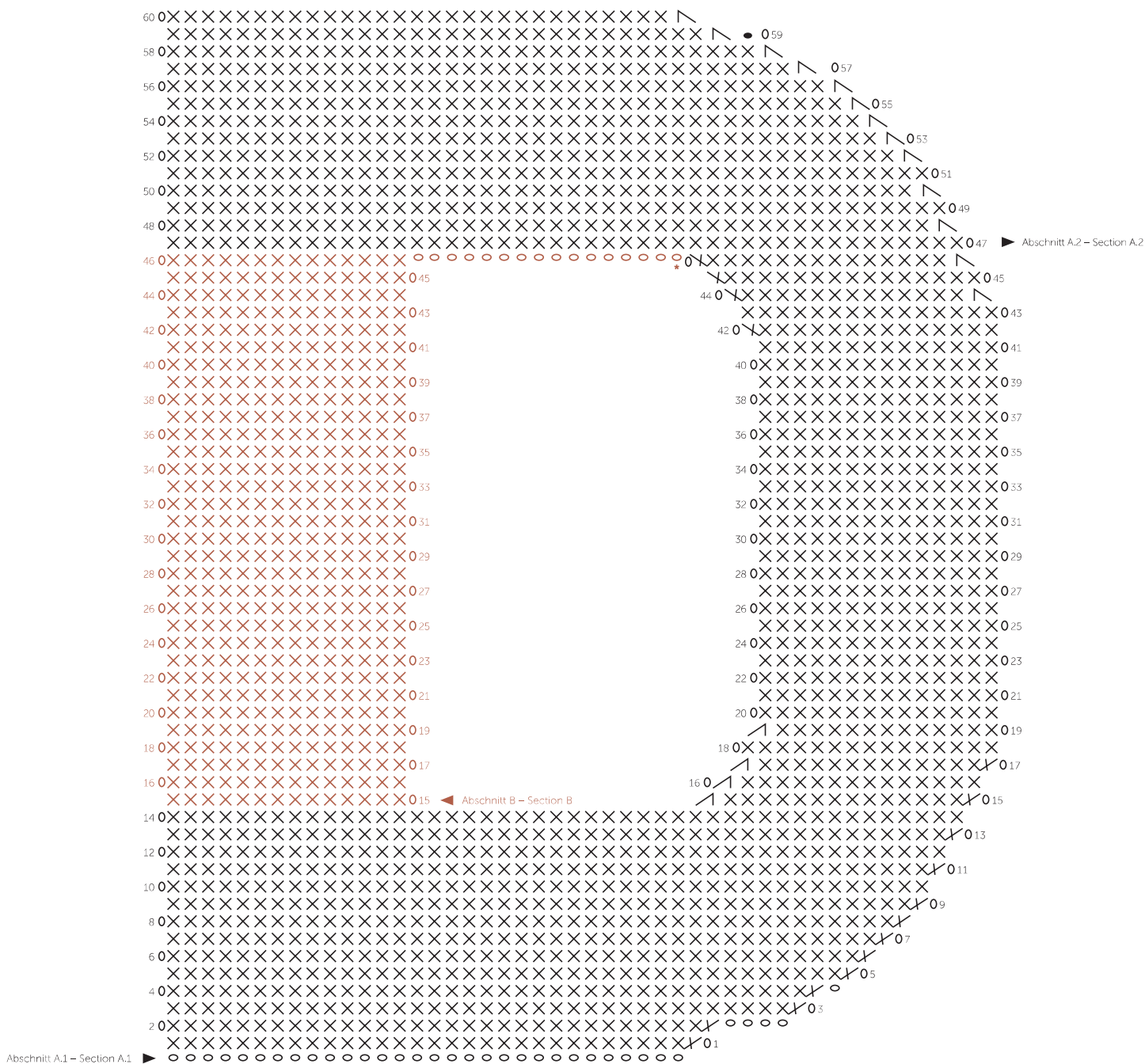
### Key

- ▶ = start
- = 1 sl st
- = 1 chain
- X = 1 single crochet
- ∧ = work 2 single crochets together
- XX = 2 single crochets in 1 stitch
- \*





### Chart



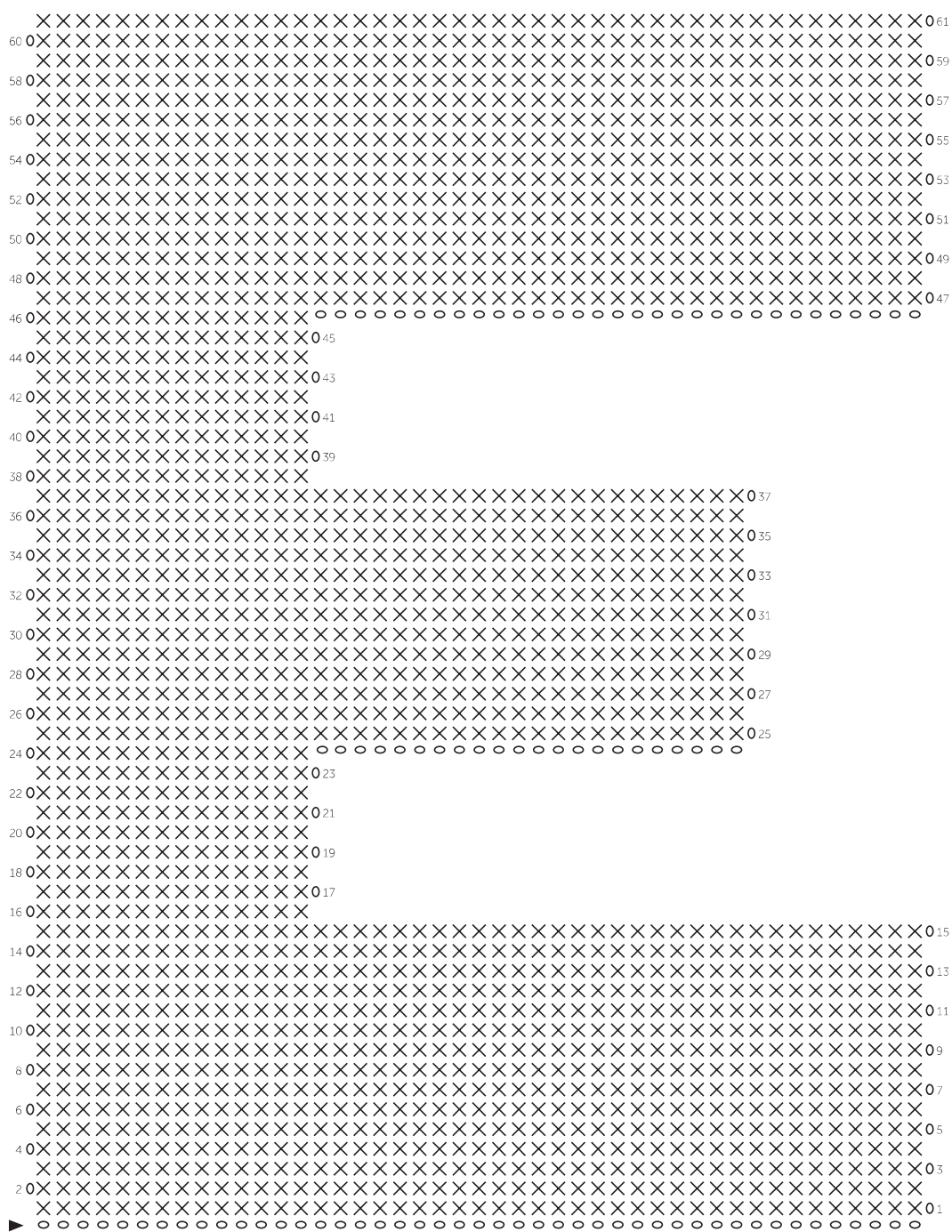
### Key

- ▶ = start
- = 1 sl st
- o = 1 chain
- X = 1 single crochet
- / = work 2 single crochets together
- X/ = 2 single crochets in 1 stitch
- \* = cut thread





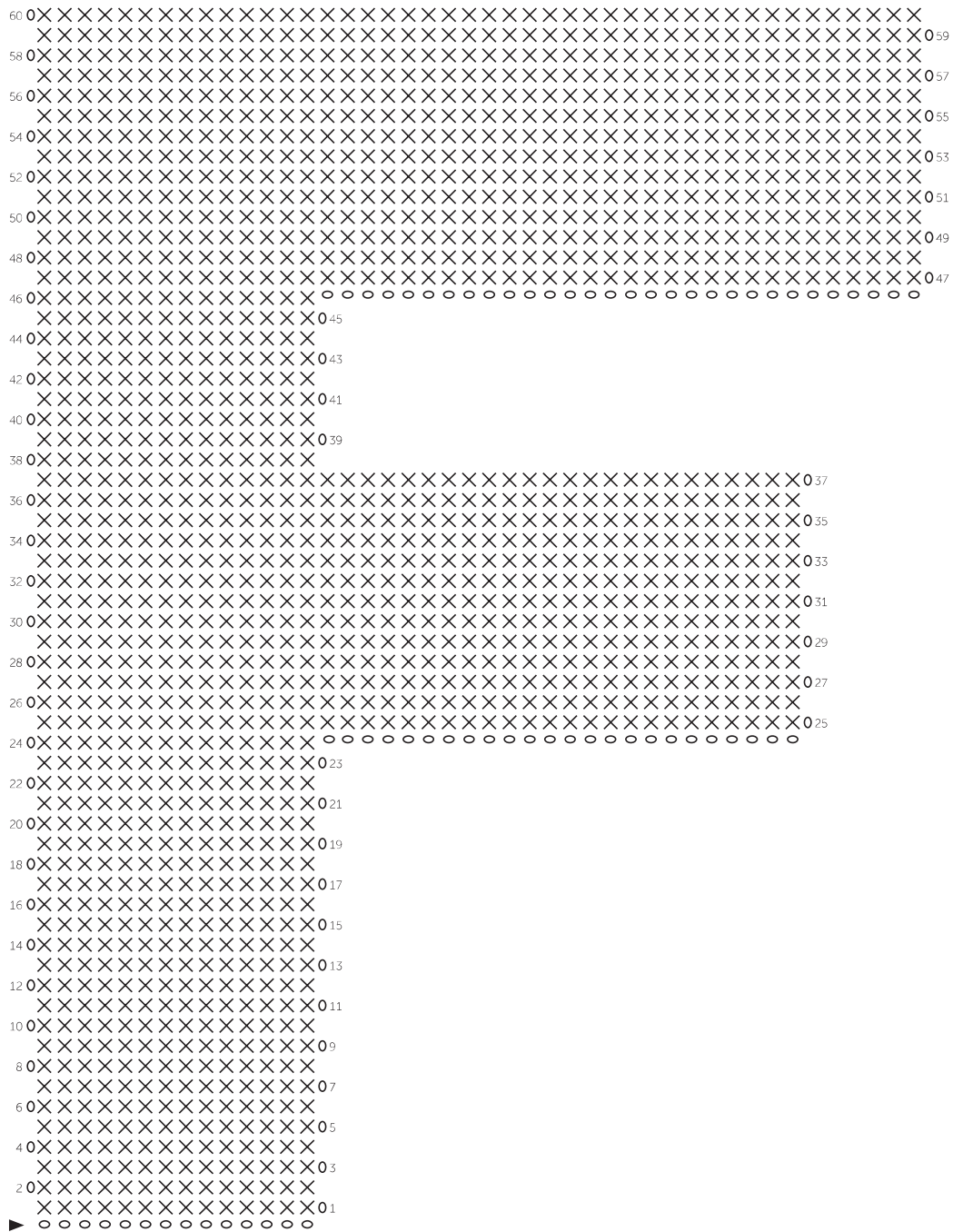
### Chart



- Key**
- ▶ = start
  - = 1 chain
  - × = 1 single crochet



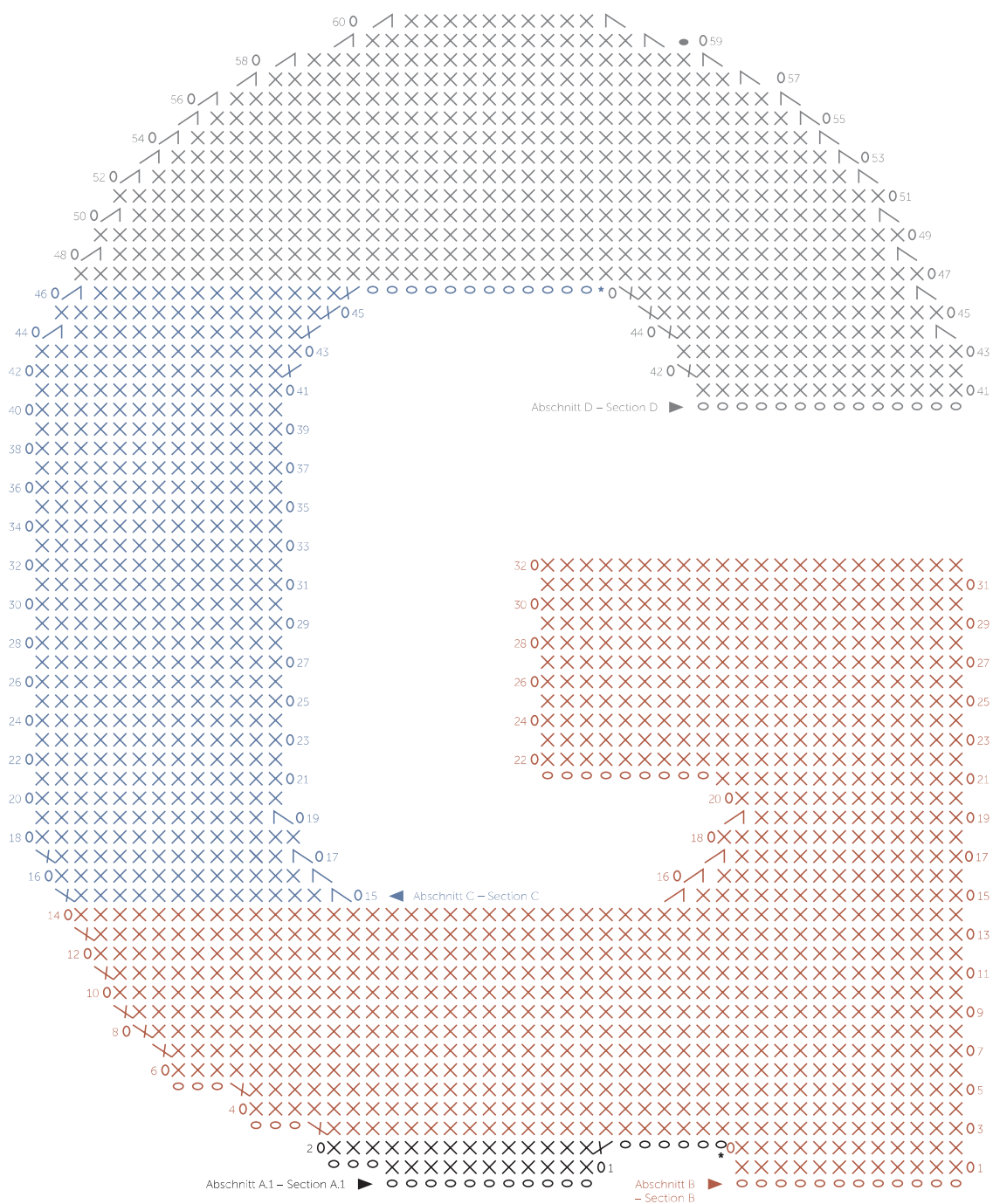
**Chart**



- Key**
- ▶ = start
  - = 1 chain
  - × = 1 single crochet



### Chart



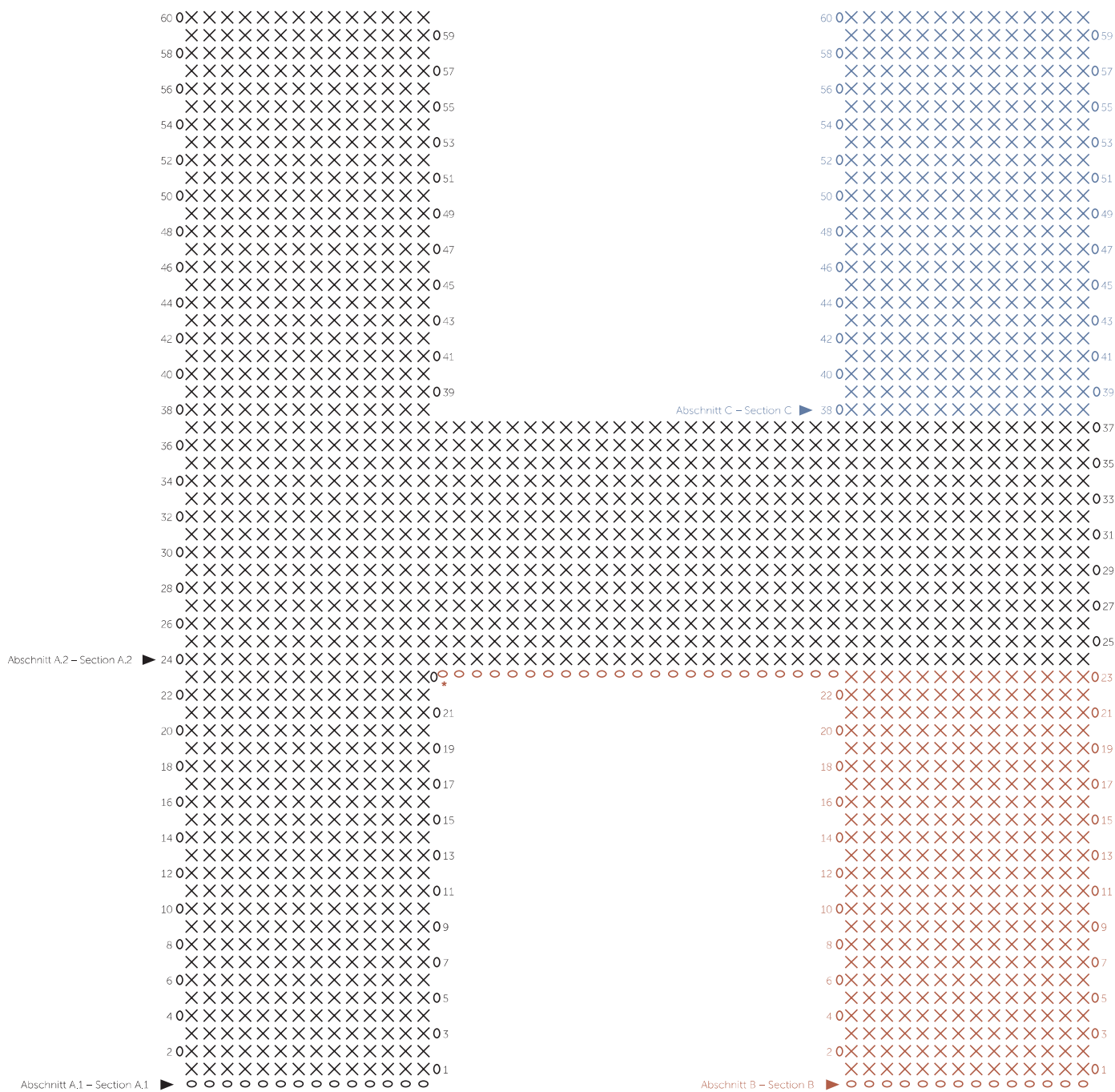
### Key

- ▶ = start
- = 1 sl st
- o = 1 chain
- X = 1 single crochet
- ∧ = work 2 single crochets together
- 2X = 2 single crochets in 1 stitch
- \* = cut thread





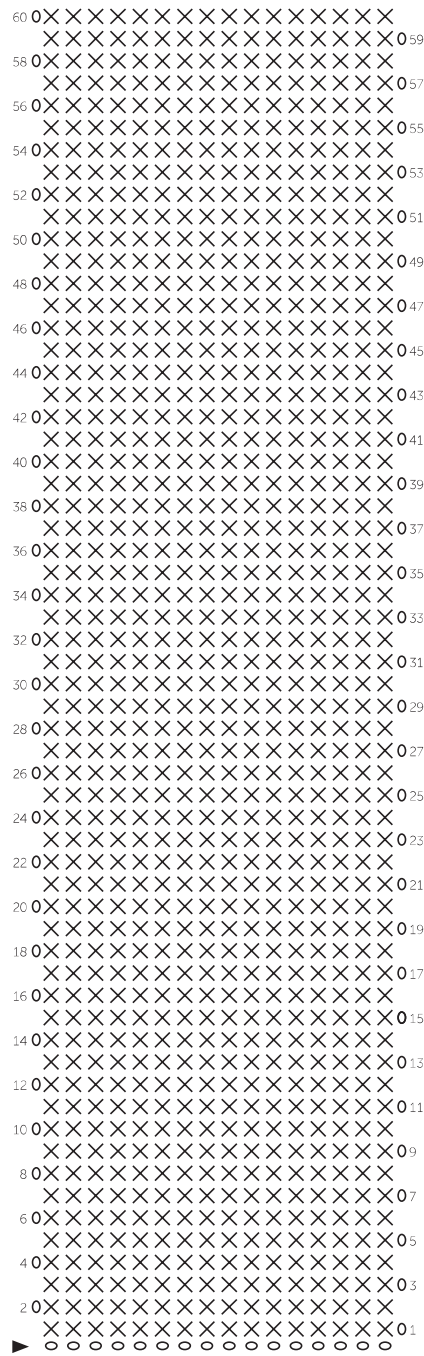
### Chart



- Key**
- ▶ = start
  - = 1 chain
  - × = 1 single crochet
  - \* = cut thread



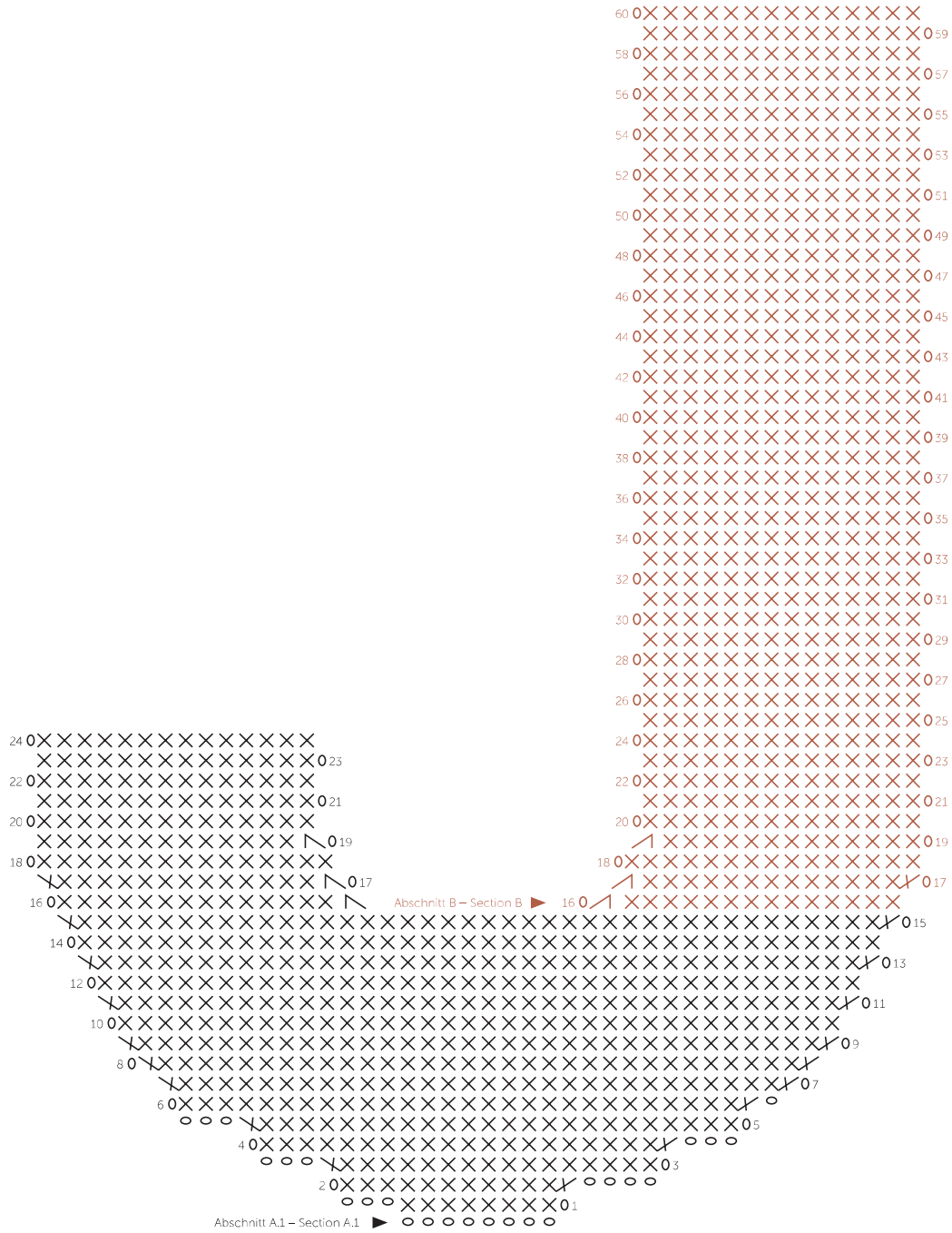
**Chart**



**Key**

- ▶ = start
- = 1 chain
- × = 1 single crochet

Chart



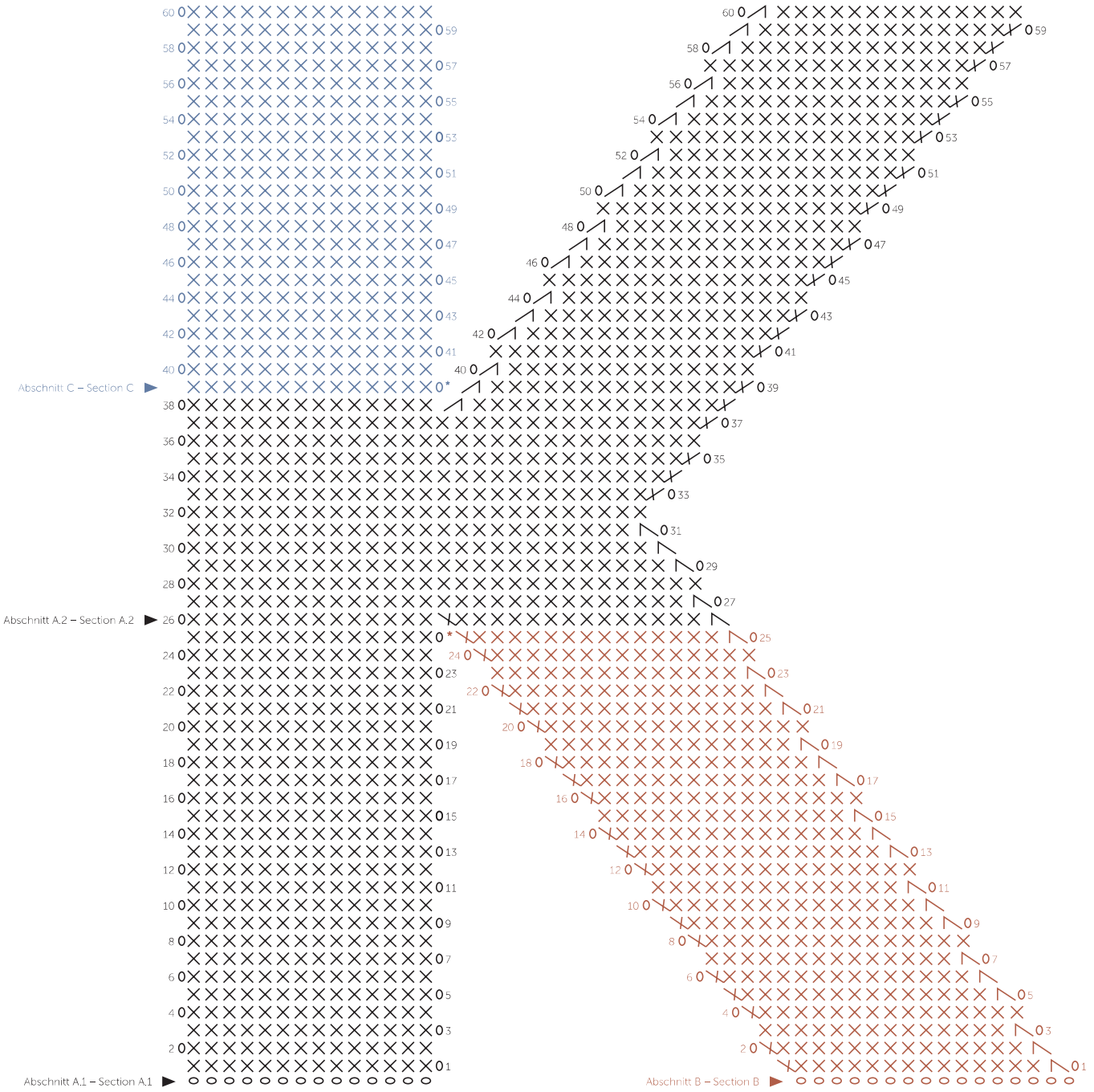
Key

- ▶ = start
- = 1 chain
- X = 1 single crochet
- X/ = work 2 single crochets together
- XX = 2 single crochets in 1 stitch





Chart

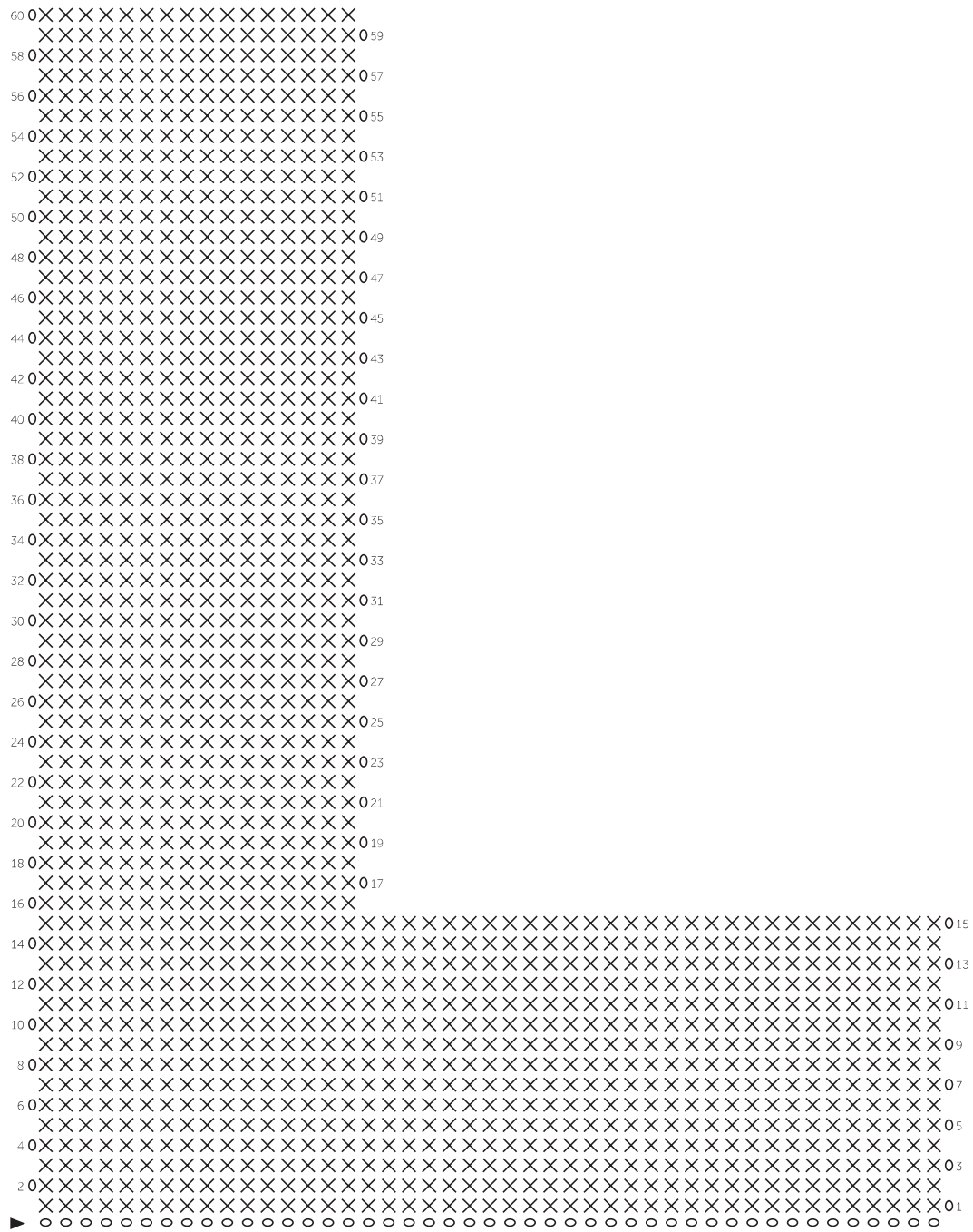


Key

- ▶ = start
- o = 1 chain
- X = 1 single crochet
- ⤴ = work 2 single crochets together
- XX = 2 single crochets in 1 stitch
- \* = cut thread



**Chart**

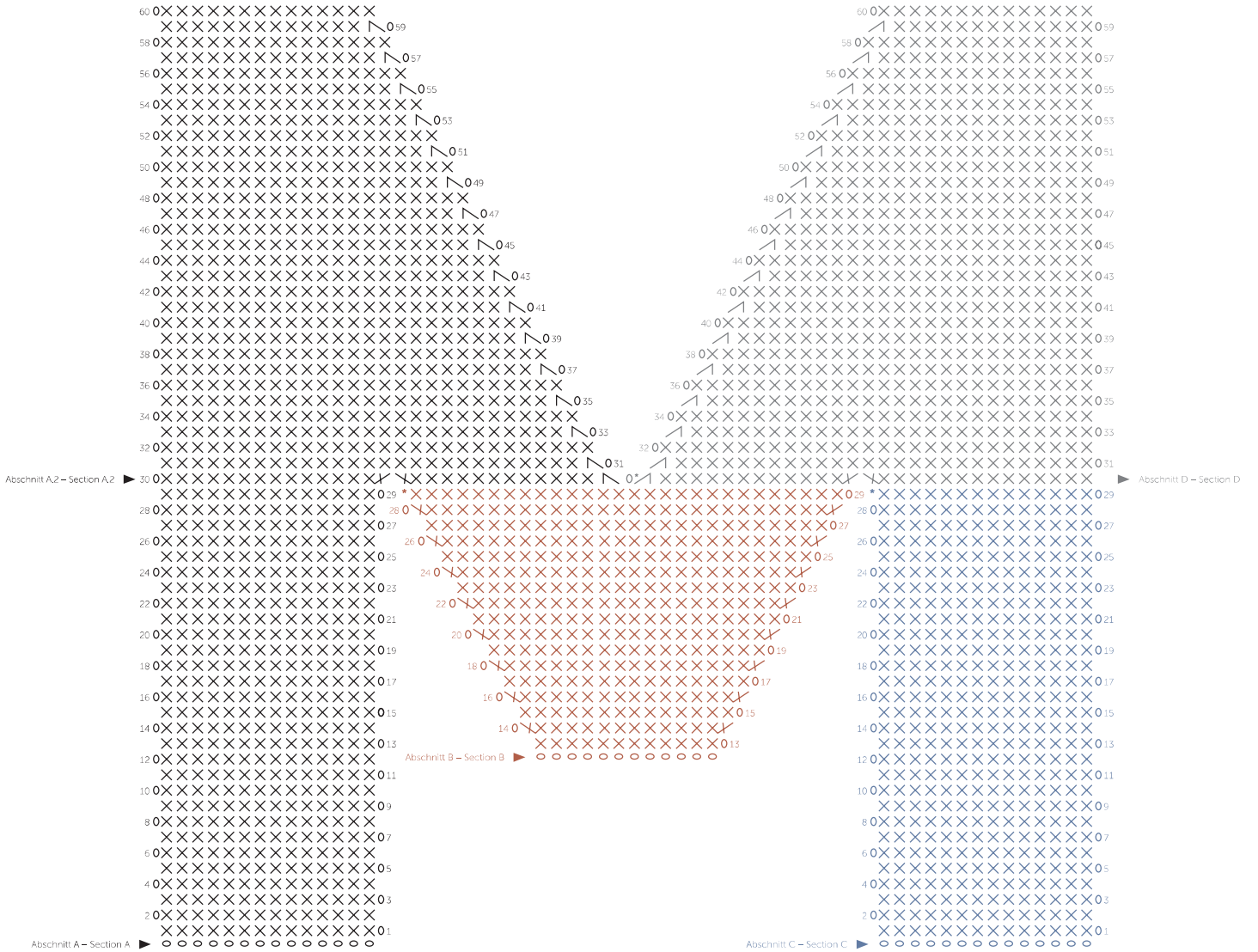


**Key**

- ▶ = start
- o = 1 chain
- X = 1 single crochet



Chart



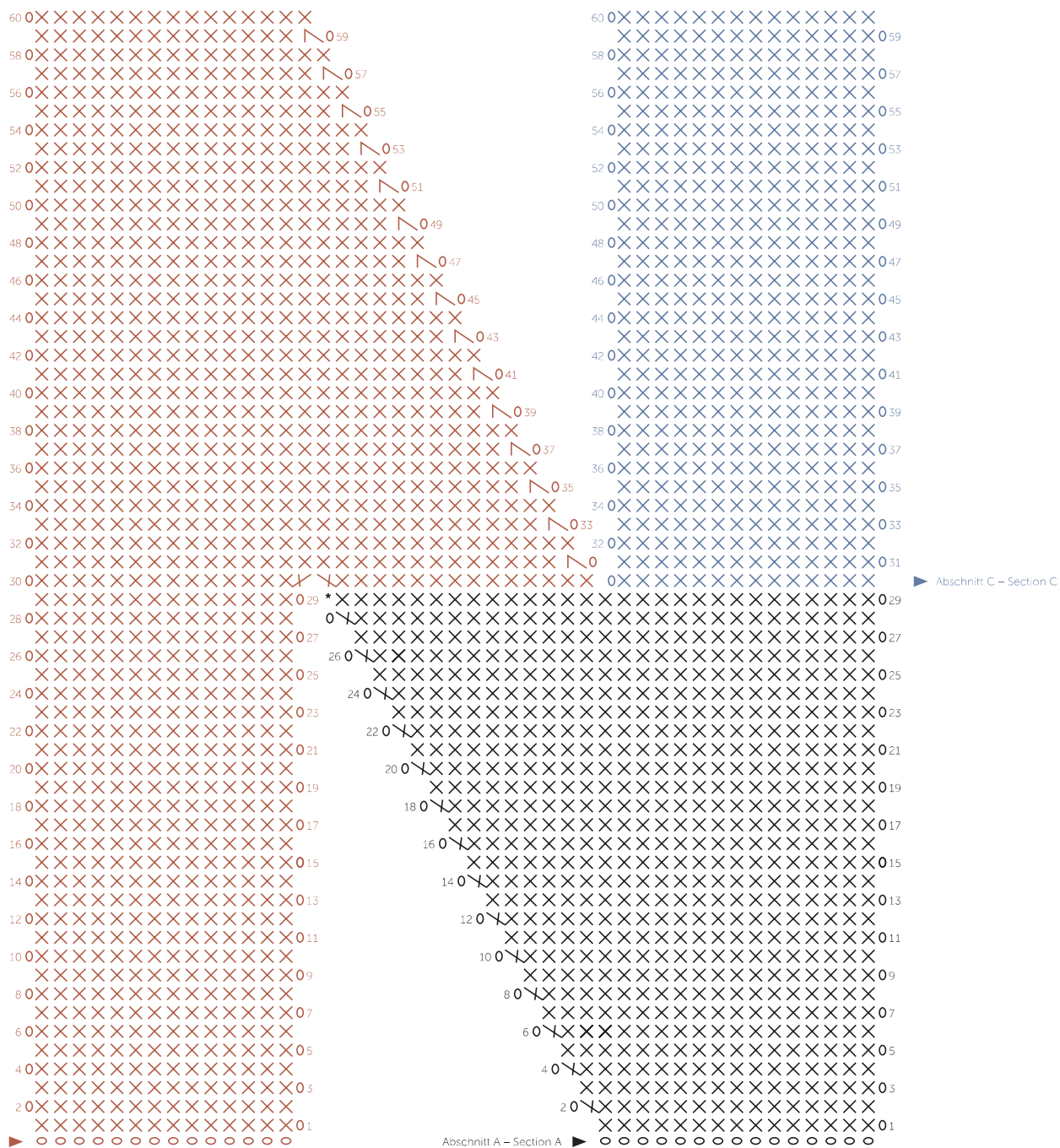
Key

- ▶ = start
- o = 1 chain
- X = 1 single crochet
- ∧ = work 2 single crochets together
- XX = 2 single crochets in 1 stitch
- \* = cut thread





### Chart

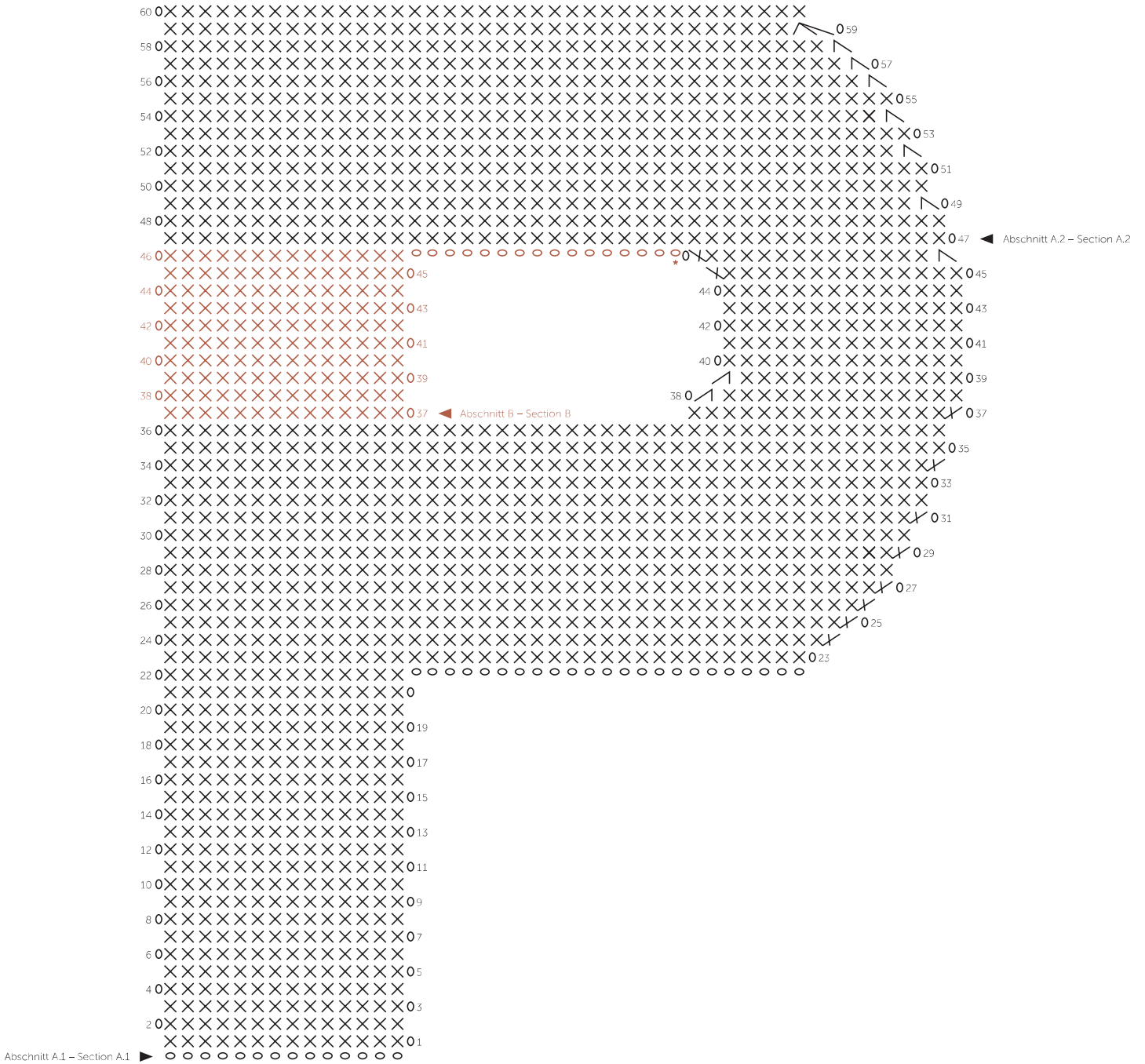


- Key**
- ▶ = start
  - o = 1 chain
  - X = 1 single crochet
  - ↙ = work 2 single crochets together
  - XX = 2 single crochets in 1 stitch
  - \*





Chart

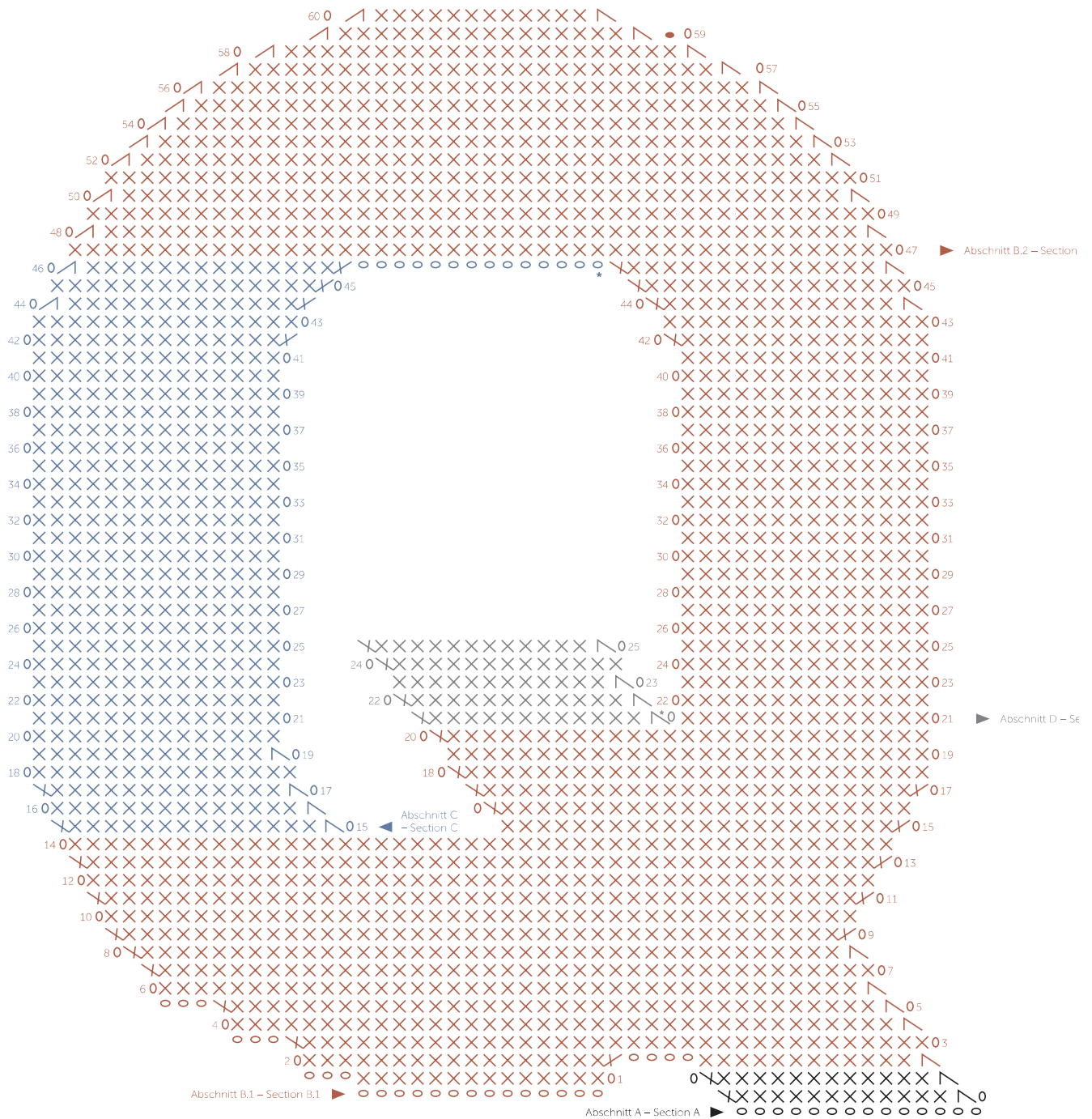


- Key**
- ▶ = start
  - o = 1 chain
  - X = 1 single crochet
  - ↙ = work 2 single crochets together
  - ↘ = 2 single crochets in 1 stitch
  - \*





Chart

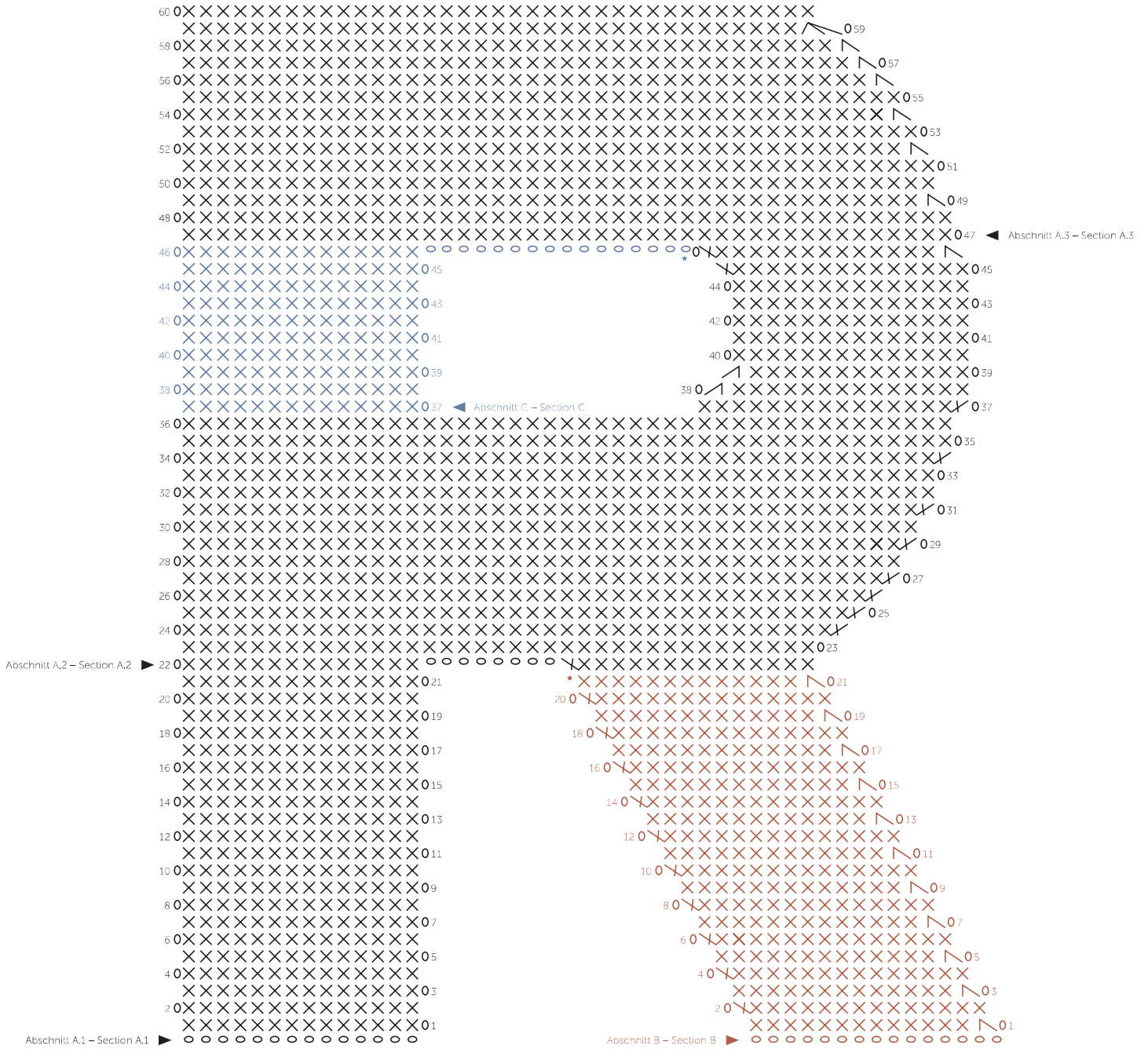


Key

- ▶ = start
- = 1 sl st
- o = 1 chain
- X = 1 single crochet
- ∧ = work 2 single crochets together
- XX = 2 single crochets in 1 stitch
- \* = cut thread



Chart

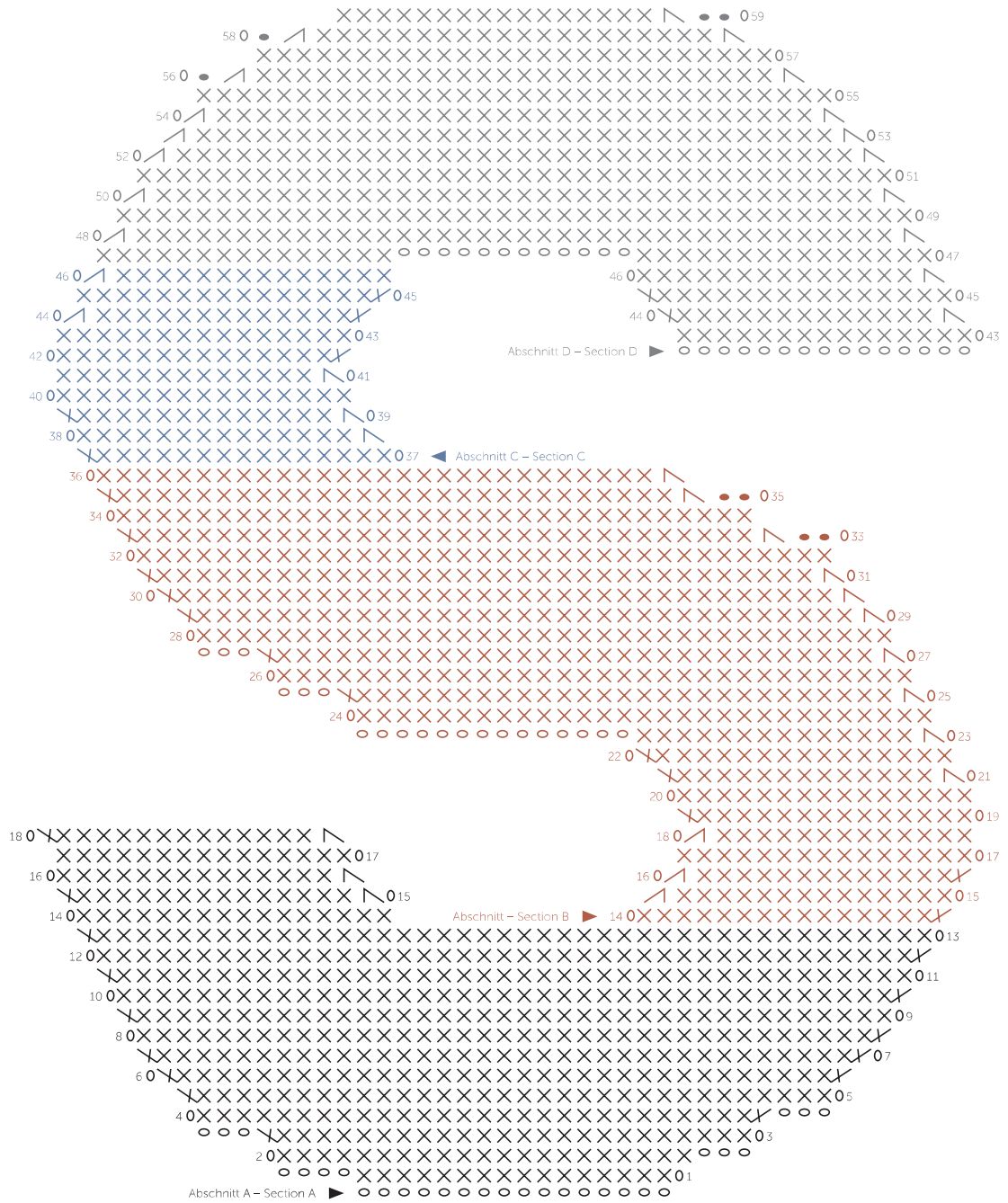


Key

- ▶ = start
- o = 1 chain
- X = 1 single crochet
- ∧ = work 2 single crochets together
- X∧ = 2 single crochets in 1 stitch
- \* = cut thread



Chart

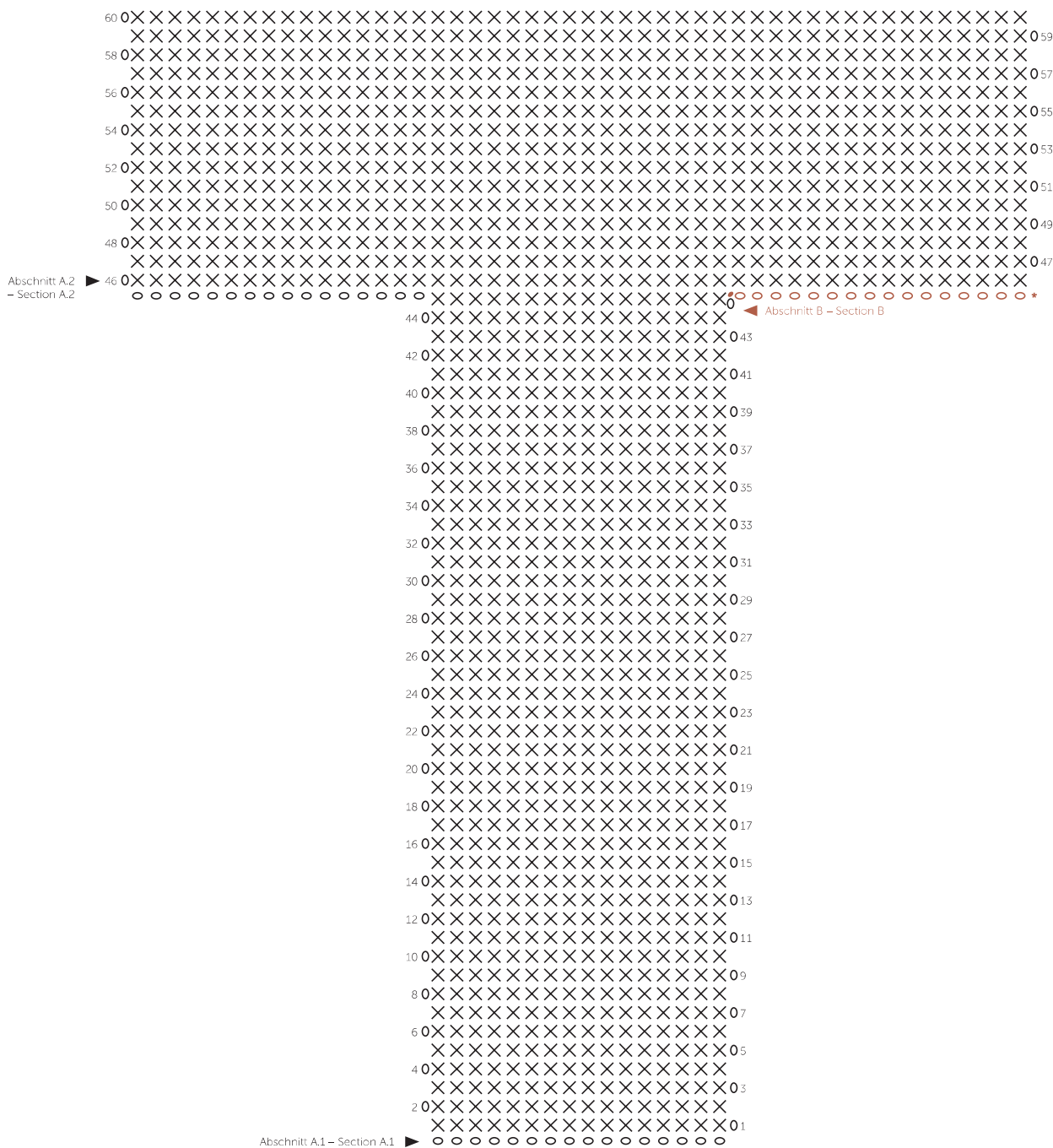


Key

- ▶ = start
- = 1 sl st
- o = 1 chain
- X = 1 single crochet
- / = work 2 single crochets together
- X/ = 2 single crochets in 1 stitch



### Chart



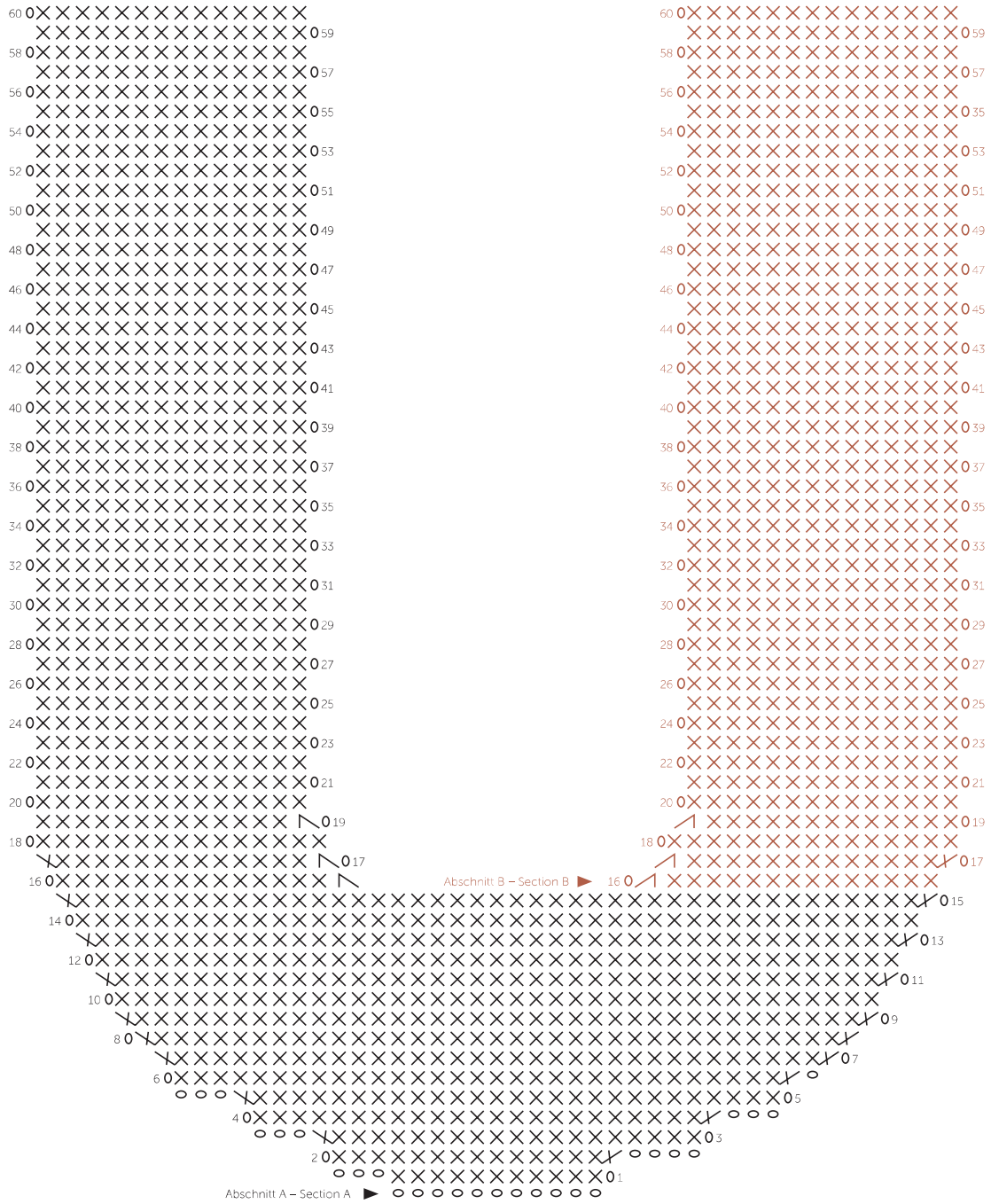
### Key

- ▶ = start
- = 1 sl st
- o = 1 chain
- X = 1 single crochet
- \* = cut thread





Chart

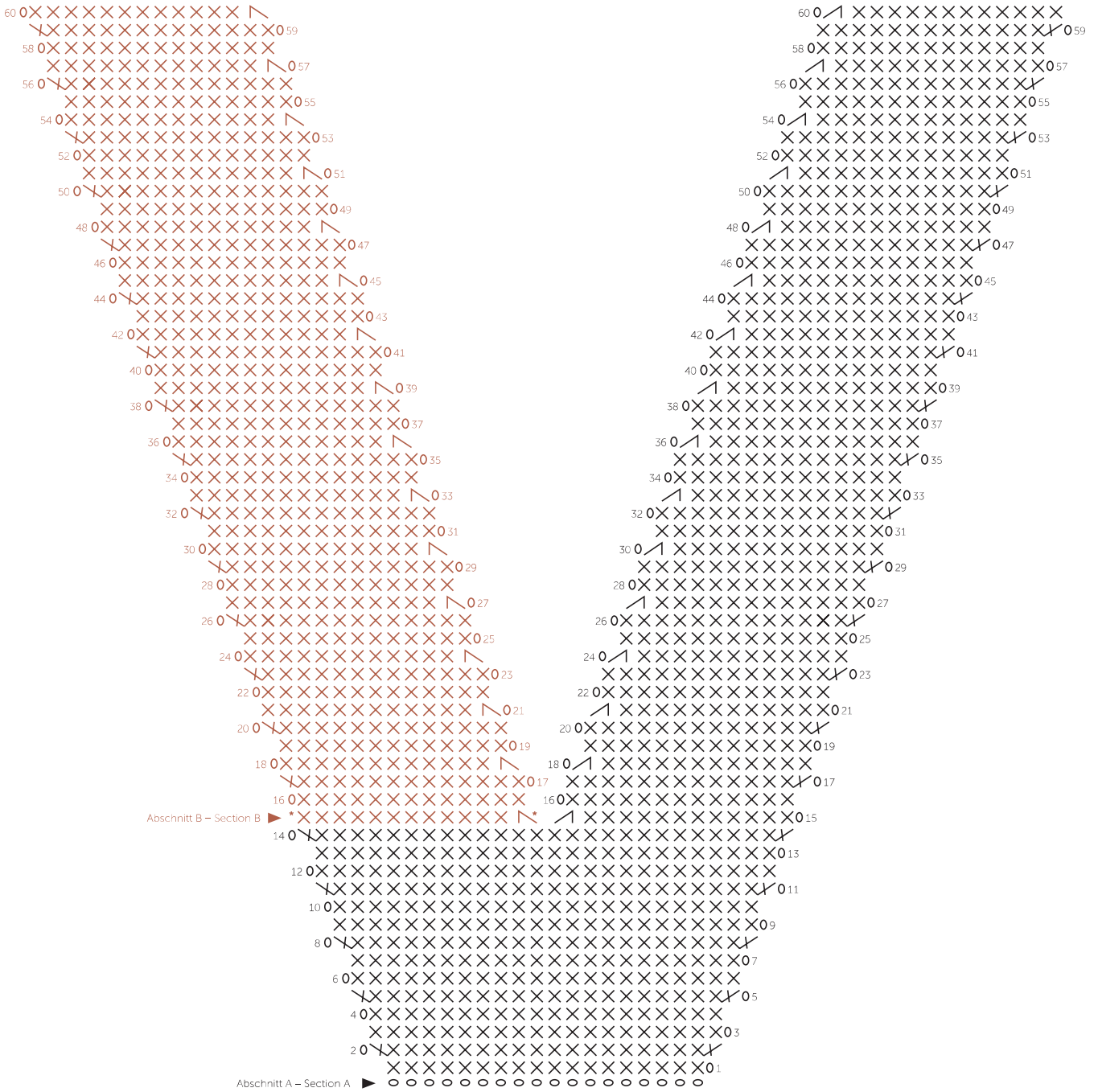


Key

- ▶ = start
- = 1 chain
- X = 1 single crochet
- ↗ = work 2 single crochets together
- XX = 2 single crochets in 1 stitch



Chart

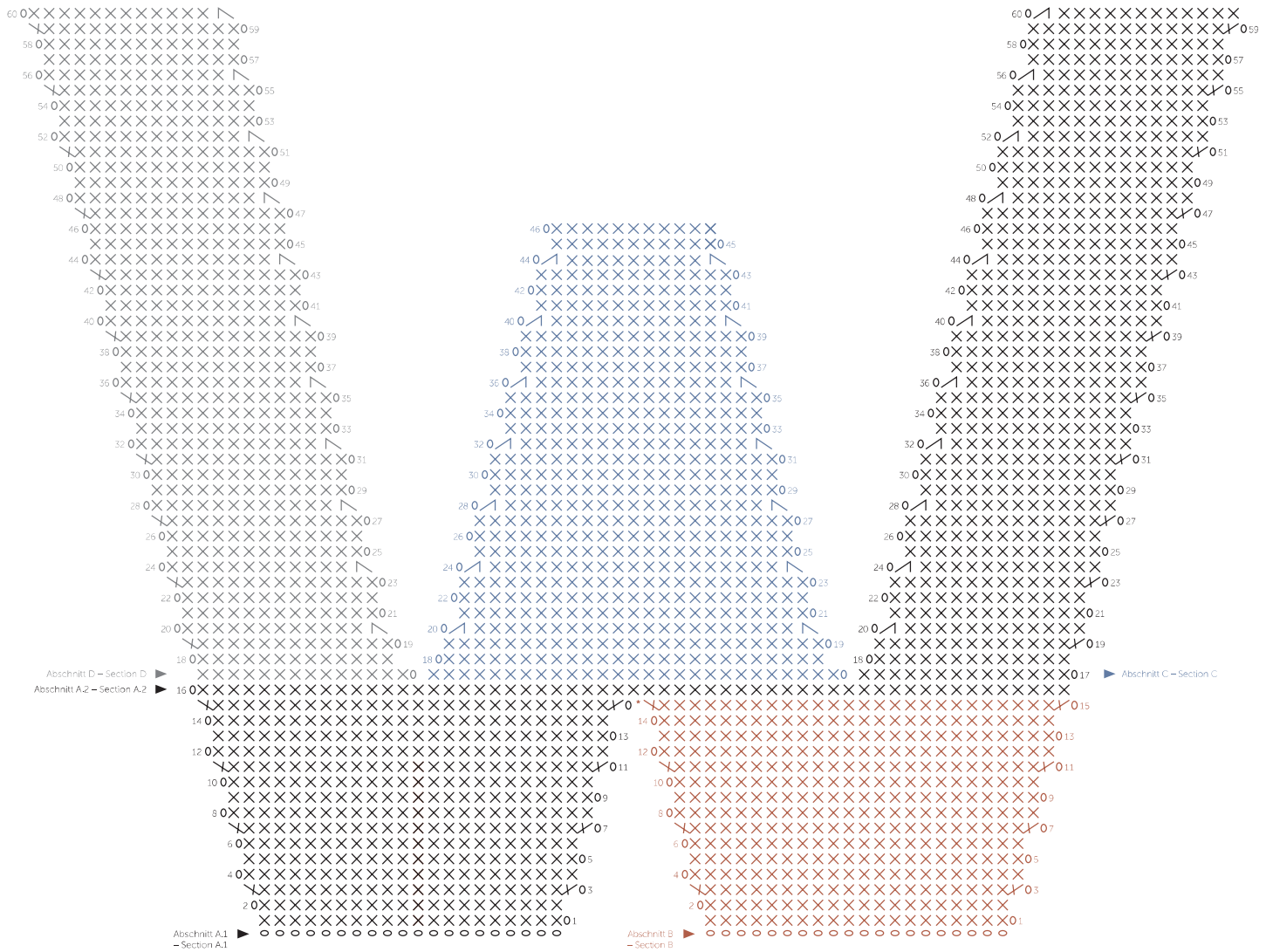


Key

- ▶ = start
- = 1 chain
- X = 1 single crochet
- // = work 2 single crochets together
- XX = 2 single crochets in 1 stitch



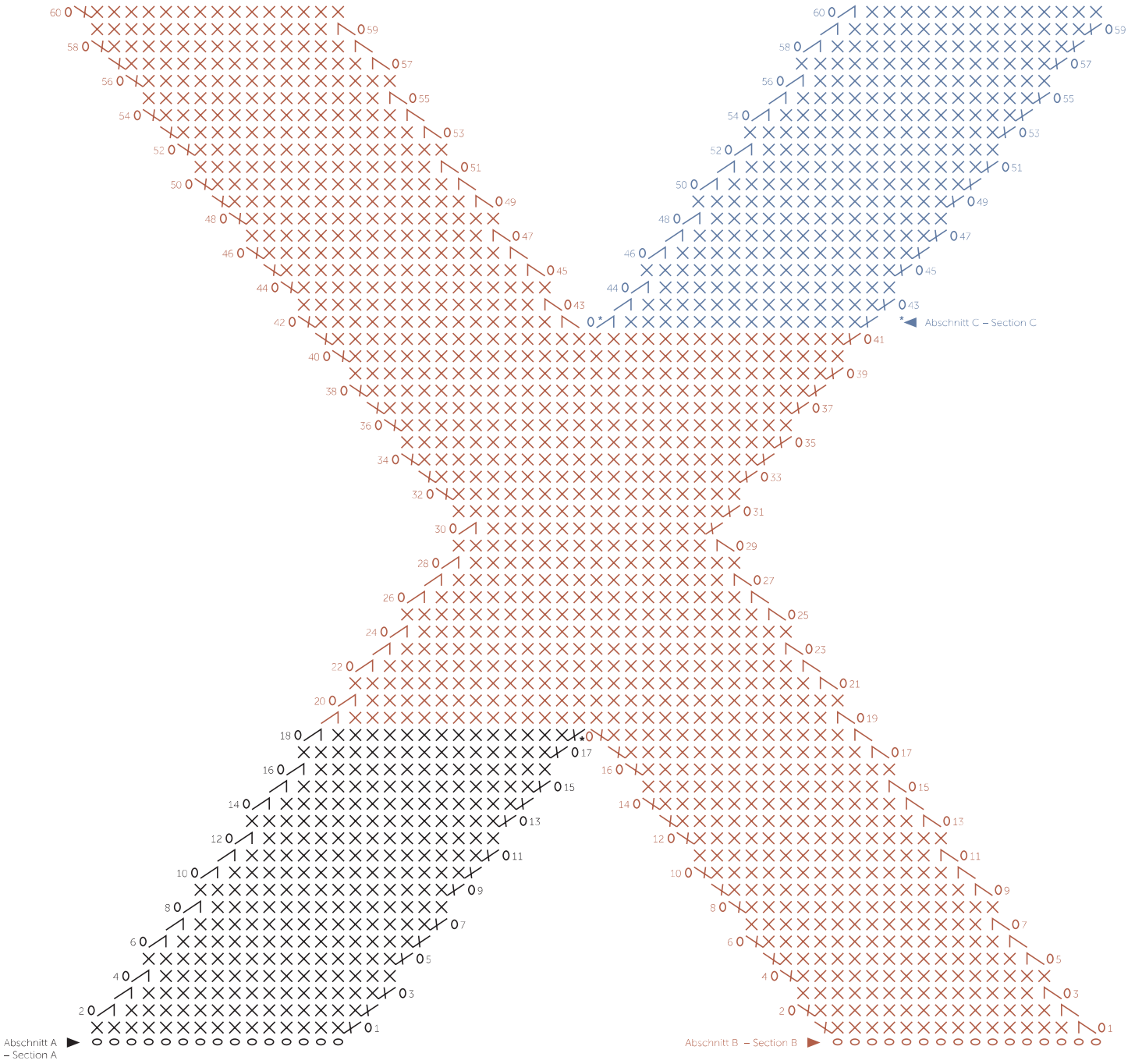
### Chart



- Key**
- ▶ = start
  - o = 1 chain
  - X = 1 single crochet
  - ∧ = work 2 single crochets together
  - XX = 2 single crochets in 1 stitch
  - \*



Chart

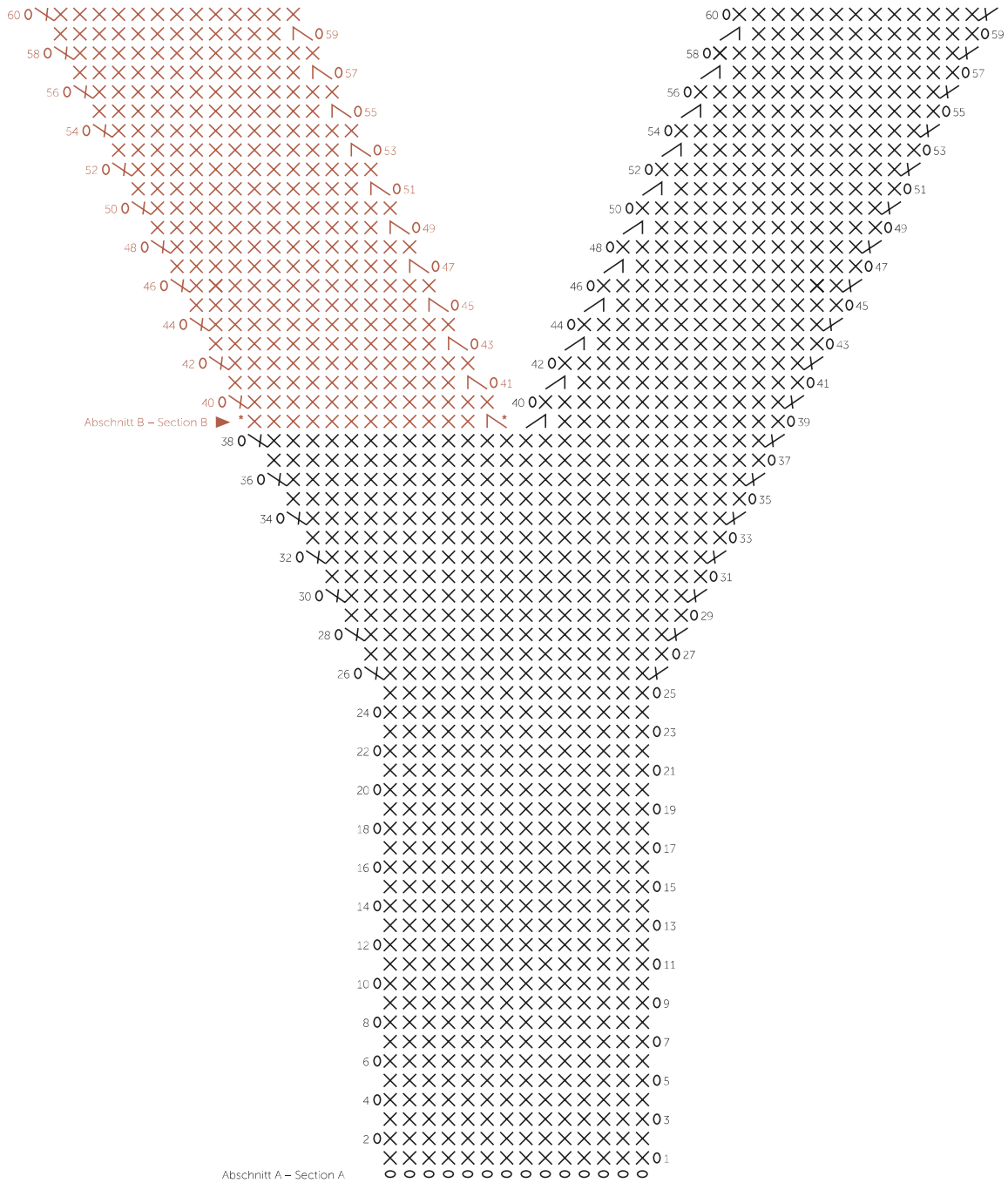


- Key**
- ▶ = start
  - = 1 chain
  - X = 1 single crochet
  - ∧ = work 2 single crochets together
  - XX = 2 single crochets in 1 stitch
  - \*





Chart

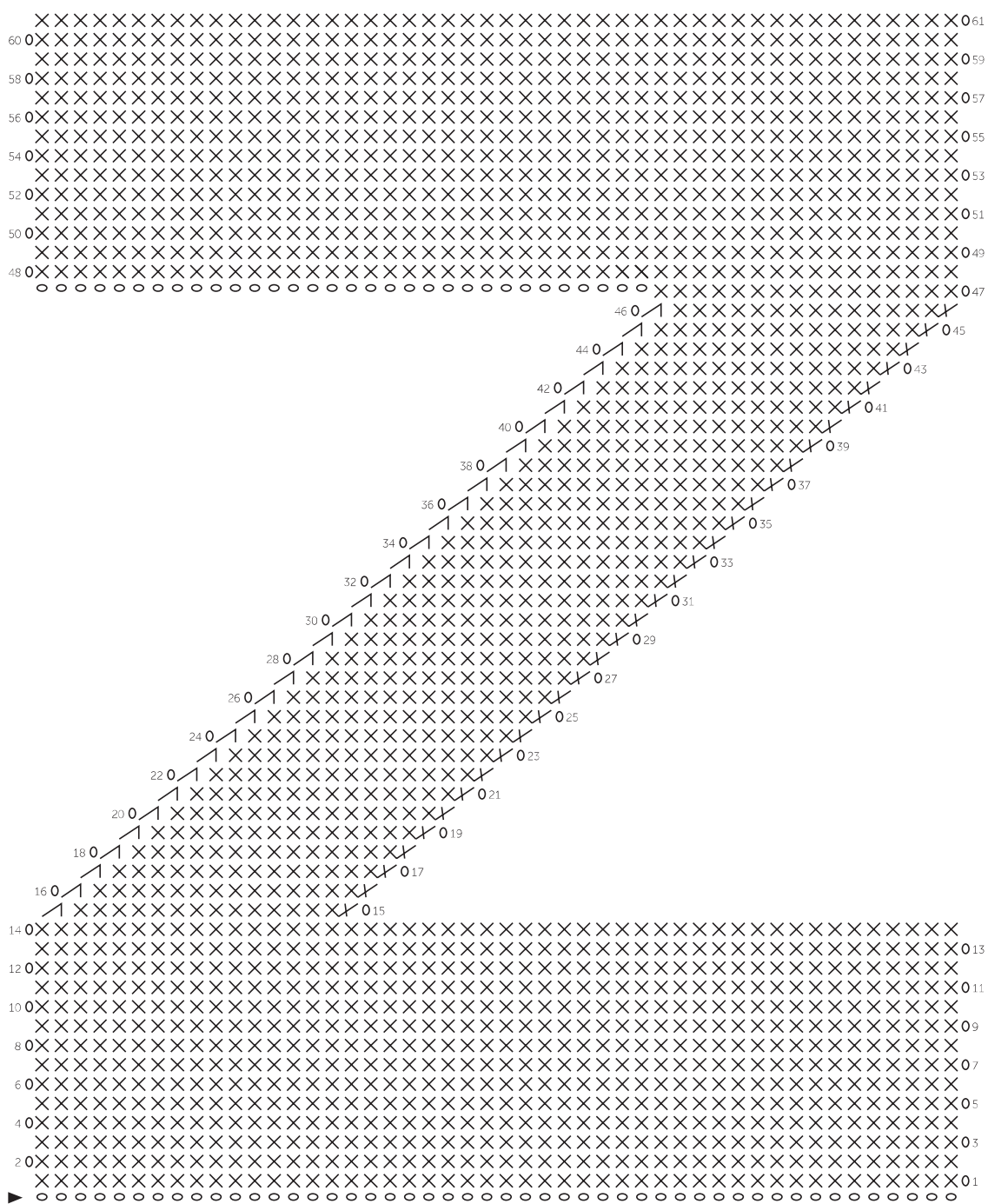


Key

- ▶ = start
- = 1 chain
- X = 1 single crochet
- // = work 2 single crochets together
- XX = 2 single crochets in 1 stitch



Chart



- Key**
- ▶ = start
  - = 1 chain
  - × = 1 single crochet